

LSI schools in the
UK, USA, Canada,
Australia, New
Zealand, France
& Switzerland



LSI Schools Around The World

UK

LSI London Central

19-21 Ridgmount Street
London WC1E 7AH
Tel. +44 (0)207 467 6500
Email: lon@LSI.edu

LSI London Hampstead

13 Lyndhurst Terrace
London NW3 5QA
Tel. +44 (0)207 794 8111
E-mail: ham@LSI.edu

LSI Brighton - Portland Campus

55-61 Portland Rd
Brighton BN3 5DQ
Tel. +44 (0)1273 722 060
E-mail: bri@LSI.edu

LSI Brighton - Ventnor Campus

13 Ventnor Villas
Brighton BN3 3DD
Tel. +44 (0)1273 722 060
E-mail: bri@LSI.edu

LSI Cambridge

41 Tenison Road
Cambridge CB1 2DG
Tel. +44 (0)1223 361 783
E-mail: cam@LSI.edu

USA

LSI Berkeley

2015 Center Street
Berkeley CA 94704
Tel. +1 510 841 4695
E-mail: ber@LSI.edu

LSI San Diego

1706 5th Avenue
San Diego CA 92101
Tel. +1 619 234 2881
E-mail: san@LSI.edu

LSI Boston

105 Beach Street
Boston MA 02111
Tel. +1 617 542 3600
E-mail: bos@LSI.edu

LSI New York

40 Rector Street,
10th Floor,
Suite 1000
New York NY 10006
Tel. +1 212 965 9940
E-mail: nyc@LSI.edu

Canada

LSI Vancouver

2nd Floor
806 Homer Street
Vancouver B.C. V6B 2W5
Tel. +1 604 683 7654
Fax. +1 604 683 7554
E-mail: van@LSI.edu

LSI Toronto

Suite 210,
1055 Yonge Street
Toronto ON M4W 2L2
Tel. +1 416 928 6888
Fax. +1 416 928 3388
E-mail: tor@LSI.edu

New Zealand

LSI Auckland

Level 1,
10-12 Scotia Place
Auckland 1010
Tel. +64 (0)9 303 3097
Fax. +64 (0)9 303 3497
E-mail: auc@LSI.edu

Australia

LSI Brisbane

6/133 Leichhardt Street
Spring Hill
Brisbane QLD 4000
Tel. +61 (0)7 3221 6977
E-mail: bne@LSI.edu

France

LSI Paris

23 Rue du Renard
75004 Paris
Tel. +33 (0)1 4260 5370
E-mail: par@LSI.edu

Switzerland

LSI Zurich

Kreuzstrasse 36
8008 Zurich
Tel. +41 (0)44 251 5889
Fax. +41 (0)44 251 5805
E-mail: zur@LSI.edu



Visit lsi.edu to find out more about our
schools and take a virtual tour

The LSI Experience

"LSI Hampstead provided an excellent environment to learn English and have fun. It was one of the best experiences of my life."

GABRIELLA ILLÉS, TV PRODUCER, HUNGARY

1

Your LSI programme starts at home



With E-LSI you can access learning materials and start your academic programme as soon as you book.

2

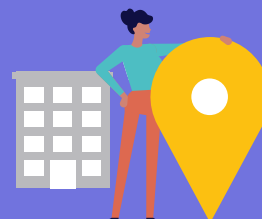
A warm welcome upon arrival



You will arrive to a warm welcome from your LSI host family or at your LSI residence to make sure you are comfortable and get fully settled.

3

Orientation in the school



First day in school



5

Continuous appraisal

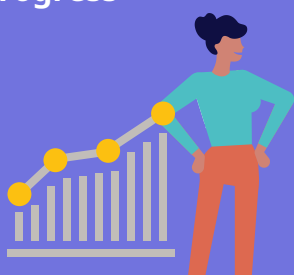


We continuously monitor your progress through a regular system of testing and customised learning plans. Through E-LSI you can access your academic information, including test scores and tutorial reports.

Our friendly staff will explain everything you need to know about your programme. You'll have a thorough skills test to ensure that we place you into the right class, we'll introduce you to our cultural and social programme and we'll ensure that you meet all your classmates and the school staff.

6

Clear and substantiated progress



Entry tests and exit tests, along with regular appraisal from our academic staff show you how much progress you've made during your programme.

7

Graduation ceremony



In LSI's graduation ceremony, you'll receive your graduation certificate and celebrate your programme with your new friends

* Not available in all LSI centres. Please check with the school at the time of booking

General/Academic/English for Specific Purposes

	ACADEMIC TERM ABROAD	ACADEMIC YEAR ABROAD		
No. of weeks. Prices p/wk	1-3	4-11	12-23	24+
Afternoon 10 [^]	170	165	160	155
General 20	325	315	305	280
General 20 - English 28+ (1-9 weeks)	325	315		
Intensive 24	375	360	340	310
Intensive 30	430	390	370	330
Academic English 30			370	330
Business English 30 [^]	430	390	370	330
TOEFL 30 /IELTS 30 [^]	430	390	370	330
No. of weeks. Course Prices	4	8	10	12
Cambridge 30 Exam Preparation	1560	3120	3900	4440
No. of weeks. Prices p/wk			1-4	1-8
English for Public Speaking & Presentations ^{>>}			370	
Medical English ^{>>} 10 lessons p/wk				370
Legal English ^{>>} 10 lessons p/wk				370
Course Prices p/wk				
English for Teaching Closed groups only				435
English for Teaching G20 + 5 individuals p/wk				650
English for Teaching G20 + 10 individuals p/wk				975
Personalised Programme Tailor-made courses available upon request. (e.g. fashion, social media etc.)			Contact LSI London	
One to One Lesson price p/lesson				65
Plus Courses Supplement 5/10 lessons				325/650
[^] Not available on a Short Term Study Visa. ^{>} Options also available as Intensive 24. ^{>>} These are premium certificate courses in small groups of 5 students. These courses can be taken independently, or in addition to General 20.				

Individual & Mini Groups Premium Courses

One-to-one				
No of lessons p/wk	20	30	40	50
Course price	1300	1950	2600	3250
Mini Group (Business/General English/Exam Prep)				
No of lessons p/wk		20	30	40
Course prices	1 wk	745	1030	1300
	2 wks	720	1000	1280
	3 wks	700	970	1245
	4+ wks	675	950	1225
9 Day Compact				
No of lessons p/wk			82	92
Course prices			5595	6275

Club 40+ Experience

No. of weeks. Prices p/wk	1-4
3 activities supplement	290
Please note that these activities are supplementary and exclusively for students aged 40+. This programme needs to be booked in addition to the G20. Students can choose to have lessons in mixed-aged classes of 16+ or 28+.	

Additional Costs

EXAM FEES

B2 First/C1 Advanced/C2 Proficiency	Contact LSI London
IELTS	Contact LSI London

OTHER FEES

Registration fee	90
Placement fee for volunteering in the UK (charities experience)	Contact LSI London
Courier fee	90
Health insurance p/wk	Contact LSI London
Airport transfer one way	
Heathrow/London City	115
Gatwick/Stansted/Luton	140

Accommodation

HOMESTAY (Prices per person p/wk)	B&B	HB
Single room (45-60min from LSI London)	190	240
Twin room* (45-60min from LSI London)	160	200

Supplements (Prices per person p/wk)	
Special diets B&B/HB	30/50
Summer (Jun 16 - Aug 25)	35
Christmas Supplement (Dec 23 - Jan 1 2025)	50
Up to 45min journey from LSI London	60
Executive room private bathroom (en-suite or sole use)	85

RESIDENCE (No. of weeks. Prices per person p/wk)	2-4	5+
East Central House - Single room, private bathroom	399	375

Flat share	
Tottenham Hale - Single room, shared bathroom	Contact LSI London
Canada Water - Shared room, shared bathroom	Contact LSI London

Accommodation prices are subject to change throughout the year. Therefore, it is important to contact LSI London to confirm the prices at the time of your exchange programme.
The arrival and departure dates for the homestay are either Saturday to Saturday or Sunday to Sunday.
* When two students book for the same start and end date.

Other accommodation options available at www.lsi.edu/accommodation

Additional Course Information

Class size: Max 16 students.
Lesson duration: 50 min (45 min for Premium Courses).

General Courses & Business English
Start dates for Elementary to Advanced levels: Every Monday.
Start dates for Beginner level: First Monday of Feb, Apr, Jun, Sep, Nov.

English 28+**
Start Dates: Every Monday from:
Winter 2024: Jan 2 to Feb 26 (course ends on March 1)
Summer 2024: Jul 1 to Aug 27 (course ends on Aug 30)

**The English for 28+ requires a minimum language proficiency level of B1 Intermediate.

Academic Term Abroad (ATA)/Academic Year Abroad (AYA)
Start dates: First Monday of Jan, Apr and Sep.

Academic English/TOEFL & IELTS
Start dates: Every Monday. First Monday of Jan, Apr and Sep.
Exams are provided by third parties. For exam prices & test-centre locations, please contact LSI London.

Cambridge English Exam Preparation
Start dates: B2: Mar 18 - 10 wks; Jul 29 - 4 wks; Sep 23 - 8 wks
C1: Mar 18 - 10 wks; Jul 29 - 4 wks; Sep 23 - 8 wks
C2: May 27 - 4 wks; Aug 26 - 12 wks

Please be advised that class availability depends on demand.
Exam dates: B2 First: May 25, Aug 23, Nov 16
C1 Advanced: May 25***, Aug 23, Nov 16
C2 Proficiency: Jun 20, Nov 16

***Computer-based exam.
The exam dates are paper-based or computer based.
Please be aware that all dates are subject to change at short notice based on demand.

English for Public Speaking & Presentations, Medical English, Legal English
Start Dates: EPS&P: 4 modules in total. Each week, a new module
Module 1: Jan 8, Jul 1, and Sep 2
Module 2: Jan 15, Jul 8, and Sep 9
Module 3: Jan 22, Jul 15, and Sep 16
Module 4: Jan 29, Jul 22, and Sep 23
ME & LE: 8 modules in total. Each week, a new module.
Module 1: Jan 8, Jul 1, and Sep 2
Module 8: Feb 26, Aug 19, and Oct 21
Please note that students can join the lessons every Monday.

English for Teaching
Start dates: Contact us.

Premium Courses
Start dates for One-to-one & Mini Group: Every Monday.
Start dates for 9 Day Compact: Every Saturday.

Club 40+ Experience
Start dates: Jan 8 - 4 weeks; Feb 5 - 4 weeks; Mar 4 - 4 weeks; May 7† - 4 weeks; Jul 1 - 4 weeks; Aug 5 - 4 weeks; Sep 2 - 4 weeks; Nov 4 - 4 weeks.
Students can join the programme every Monday within the 4-week course period.
†Start date due to UK public holiday.

Public Holidays
No instruction on the following dates: Jan 1, Mar 29, Apr 1, May 6, 27, Aug 26.
Christmas & New Year: School is closed from Dec 23 2024 to Jan 1 2025 inclusive.
2025: School reopens on Jan 2.
To obtain further information, please contact the school directly.

London Central

Registration fee	90
English Programmes (Prices per person p/wk)	
Tuition only for ages 6-11 ¹ and 12-17 ²	350
Tuition, lunch + activities for ages 12-17 only ²	590
Winter English Programme+ full board homestay, twin room accommodation for ages 12-17 years ²	
Winter for groups & individuals	855
Summer for groups only	880
Summer English Programme+ full board residential accommodation for ages 12-17 years ²	
Summer for groups & individuals	1255
Airport transfer required one way	
Heathrow/London City	110
Gatwick/Stansted/Luton	135
Check-in service ³	Contact LSI London

¹ Students aged 6-11 years must be accompanied by a parent or guardian. The programme for students in this age group includes tuition only. The programme for this age group is available only in the winter of 2024.

² The programme does not include a travel card.

³ There is a compulsory fee for unaccompanied minors under the age of 16.

Please get in touch for a quote regarding transfers for groups.

Class size: 18 students.
Lesson duration: 50 min.

Start dates (Homestay)
Every Monday from:
Winter 2024: Jan 8 to Jan 29 (course ends Feb 2, students depart Feb 3). GROUPS & INDIVIDUALS*.
Summer 2024: Jun 24 to Aug 5 (course ends Aug 9, students depart Aug 10). GROUPS.
Winter 2025: Jan 6 to Feb 3 (course ends Feb 7, students depart Feb 8). GROUPS & INDIVIDUALS**.

Start dates (Residence)
Every Monday from:
Summer 2024: Jul 1 to Aug 5 (course ends Aug 9, students depart Aug 10). GROUPS & INDIVIDUALS.
* Individuals can start the programme from Jan 2.
** The winter programme in 2025 is available for ages 12-17 only.
Students will be notified of the campus location at the time of booking. Please note that, subject to our Terms and Conditions, LSI reserves the right to change the campus location.

Additional course information
Standard timetable: Arrivals are on Sunday and departures are on Saturday. The maximum booking length for accommodation homestay is 4 weeks (27 nights) for individuals under 16 years old.
Please note that the junior programmes may take place at either the Hampstead or Central campus. The exact campus will be determined and informed at a later date with more details.

Junior Courses for Groups
In addition to our published start dates, the school can accommodate groups of various age ranges at different times throughout the year. Maximum class sizes for closed groups are subject to negotiation. One group leader may accompany each group of 10-15 students for free, which includes transfers, accommodation, and activities.

London Hampstead

Registration fee	90
English Programmes (Prices per person p/wk)	
Tuition only for ages 6-11 ¹ and 12-17 ²	350
Tuition, lunch + activities for ages 12-17 only ²	590
English Programme+full board homestay, twin room accommodation for ages 12-17 years ²	
Summer for groups & individuals	880
Future Leaders Programme+full board homestay accommodation for ages 14-17 years ²	
Summer for groups & individuals	1255
Airport transfer required one way	
Heathrow/London City	110
Gatwick/Stansted/Luton	135
Check-in service ³	Contact LSI London

¹ Students aged 6-11 years must be accompanied by a parent or guardian. The programme for students in this age group includes tuition only. The programme for this age group is available only in the summer.

² The programme does not include a travel card.

³ There is a compulsory fee for unaccompanied minors under the age of 16.

Please get in touch for a quote regarding transfers for groups.

Class size: 18 students.
Lesson duration: 50 min.

Start dates (Homestay)
Every Monday from:
Summer 2024: Jun 24 to Aug 5 (course ends Aug 9, students depart Aug 10). GROUPS & INDIVIDUALS.
Students will be notified of the campus location at the time of booking. Please note that, subject to our Terms and Conditions, LSI reserves the right to change the campus location.

Additional course information
Standard timetable: Arrivals are on Sunday and departures are on Saturday. The maximum booking length for accommodation homestay is 4 weeks (27 nights) for individuals under 16 years old.
Please note that the junior programmes may take place at either the Hampstead or Central campus. The exact campus will be determined and informed at a later date with more details.

Junior Courses for Groups
In addition to our published start dates, the school can accommodate groups of various age ranges at different times throughout the year. Maximum class sizes for closed groups are subject to negotiation. One group leader may accompany each group of 10-15 students for free, which includes transfers, accommodation, and activities.

Brighton (£UK)

www.lsi.edu/brighton

General/Academic/English for Specific Purposes

	ACADEMIC TERM ABROAD	ACADEMIC YEAR ABROAD		
No. of weeks. Prices p/wk	1-3	4-11	12-23	24+
Afternoon 10 [^]	170	165	160	155
General 20	325	315	305	280
Intensive 24	375	360	340	310
Intensive 30	430	390	370	330
Academic English 30 Pathway Programme			370	330
Business English 30 [~]	430	390	370	330
TOEFL 30 /IELTS 30 [~]	430	390	370	330
No. of weeks. Course Prices	4	8	10	11
Cambridge 30 Exam Preparation	1560	3120	3900	4290
Intensive Cambridge CELTA Teacher Training [#]				4440
Prices p/wk				from 1430
English for Teaching Closed groups only				430
English for Teaching G20 + 5 individuals				650
English for Teaching G20 + 10 individuals				975
Personalised Programme Tailor-made courses available upon request. (e.g. Art, Tourism etc.)				Contact LSI Brighton
One to One Lesson price p/lesson				65
Plus Courses Supplement 5/10 lessons				325/650

[^] Not available on a Short Term Study Visa.
[>] Options also available as Intensive 24.
[#] Application required, exam fee included.

Premium Courses

One-to-one				
No of lessons p/wk:	20	30	40	50
Course price	1300	1950	2600	3250

9 Day Compact				
No of lessons p/wk			82	92
Course prices			5595	6275

Club 40+ Experience

No. of weeks. Prices p/wk	1-4
3 activities supplement	290

Please note that these activities are supplementary and exclusively for students aged 40+. This programme needs to be booked in addition to the G20 (mixed-aged classes of 16+).

Additional Costs

EXAM FEES

B2 First/C1 Advanced (18+ years old)	Contact LSI Brighton
IELTS	Contact LSI Brighton

OTHER FEES

Registration fee	90
Courier fee	90
Health insurance p/wk	Contact LSI Brighton
Airport transfer one way	
Heathrow	170
Gatwick	95
Stansted/Luton	240

Accommodation

HOMESTAY (Prices per person p/wk)	B&B	HB
Single room	165	210
Twin room*	145	185

Supplements (Prices per person p/wk)

Special diets B&B/HB	25/45
Summer (Jun 16 - Aug 25)	35
Christmas Supplement (Dec 23 - Jan 1 2025)	50
Executive room private bathroom (en-suite or sole use)	85

RESIDENCE (Prices per person p/wk)

Portland 55 - on-site residence

Single room, en suite	275
Twin room*, en suite	240

Mountford Student House

Single room, shared bathroom	255
Twin room*, shared bathroom	235

Supplements (Prices per person p/wk)

Summer (Jun 16 - Aug 25)	35
--------------------------	----

Accommodation prices are subject to change throughout the year. Therefore, it is important to contact LSI Brighton to confirm the prices at the time of your exchange programme.

The arrival and departure dates for the homestay are either Saturday to Saturday or Sunday to Sunday.

* When two students book for the same start and end date.

Other accommodation options available at www.lsi.edu/accommodation

Additional Course Information

Class size: Max 16 students.

Lesson duration: 50 min (45 min for Premium Courses).

General Courses & Business English

Start dates for Elementary to Advanced levels: Every Monday

Start dates for Beginner level: First Monday of Feb, Apr, Jun, Sep and Nov

Pathway Programme/Academic Term Abroad (ATA)/Academic Year Abroad (AYA)

Start dates: First Monday of Jan, Apr and Sep.

Academic English/TOEFL & IELTS

Start dates: Every Monday. First Monday of Jan, Apr and Sep.

Exams are provided by third parties. For exam prices & test-centre locations, please contact LSI Brighton.

Cambridge English Exam Preparation

Start dates: B2: Jan 8 - 11 wks; Jul 29 - 4 wks; Sep 23 - 8 wks

C1: Jan 8 - 10 wks; Jul 29 - 4 wks; Sep 23 - 8 wks

C2: May 13 - 10 wks; May 27 - 4 wks; Sep 16 - 12 wks

Please be advised that classes availability are depending on demand.

Exam dates: B2 First: Mar 23, Aug 23, Nov 16

C1 Advanced: Mar 16, Aug 23, Nov 16

C2 Proficiency: Jun 20, Jul 6, Dec 2

** Computer-based exam.

The exam dates are paper-based or computer based.

Please be aware that all dates are subject to change at short notice based on demand.

Premium Courses

Start dates for One-to-one: Every Monday.

Start dates for 9 Day Compact: Every Saturday.

Club 40+ Experience

Start dates: Mar 4 - 4 weeks; May 7† - 4 weeks; Sep 2 - 4 weeks; Nov 4 - 4 weeks.

Students can join the programme every Monday within the 4-week course period.

†Start date due to UK public holiday.

Public Holidays

No instruction on the following dates: Jan 1, Mar 29, Apr 1, May 6, 27, Aug 26.

Christmas & New Year: School is closed from Dec 23 2024 to Jan 1 2025 inclusive.

2025: School reopens on Jan 2.

To obtain further information, please contact the school directly.

www.lsi.edu/yl-brighton

Junior Courses

Registration fee	90
English Programmes (Prices per person p/wk)	
Tuition only for ages 6-11 ¹ and 12-17 ²	330
Tuition, lunch + activities for ages 12-17 only ²	570
English Programme+full board homestay, twin room accommodation for ages 12-17 years ²	
Winter for groups only	805
Summer for groups & individuals	845
Airport transfer required one way	
Heathrow	175
Gatwick	95
Stansted/Luton	240
Check-in service ²	Contact LSI Brighton

¹ Students aged 6-11 years must be accompanied by a parent or guardian. The programme for students in this age group includes tuition only.

² There is a compulsory fee for unaccompanied minors under the age of 16.

Class size: 18 students.

Lesson duration: 50 min.

Start dates (Homestay)

Every Monday from:

Winter 2024: Jan 8 to Jan 29 (course ends Feb 2, students depart Feb 3). GROUPS ONLY.

Summer 2024: Jun 24 to Aug 5 (course ends Aug 9, students depart Aug 10). GROUPS & INDIVIDUALS.

Winter 2025: Jan 6 to Feb 3 (course ends Feb 7, students depart Feb 8). GROUPS ONLY.

Additional course information

Standard timetable: Arrivals are on Sunday and departures are on Saturday. The maximum booking length for accommodation homestay is 4 weeks (27 nights) for individuals under 16 years old.

Junior Courses for Groups

In addition to our published start dates, the school can accommodate groups of various age ranges at different times throughout the year. Maximum class sizes for closed groups are negotiable. One group leader may accompany each group of 15 students for free, including transfers, accommodation, and activities. For any additional leaders accompanying groups with fewer than 15 students, there will be a charge.

Cambridge (£UK)

www.lsi.edu/cambridge

General/Academic/English for Specific Purposes

	ACADEMIC TERM ABROAD	ACADEMIC YEAR ABROAD		
No. of weeks. Prices p/wk	1-3	4-11	12-23	24+
Afternoon 10 [^]	170	165	160	155
General 20	325	315	305	280
Intensive 24	375	360	340	310
Intensive 30	430	390	370	330
Academic English 30			370	330
Business English ^{>}	430	390	370	330
TOEFL 30/IELTS 30 ^{>}	430	390	370	330
No. of weeks. Course Prices		4	8	10
Cambridge 30 Exam Preparation		1560	3120	3900
One to One Lesson price p/lesson				65
Plus Courses Supplement 5/10 lessons				325/650

[^] Not available on a Short Term Study Visa.

[>] Options also available as Intensive 24.

Premium Courses

One-to-one				
No of lessons p/wk:	20	30	40	50
Course price	1300	1950	2600	3250
9 Day Compact				
No of lessons p/wk			82	92
Course prices			5595	6275

Club 40+ Experience

No. of weeks. Prices p/wk				1-4
3 activities supplement				290
Please note that these activities are supplementary and exclusively for students aged 40+. This programme needs to be booked in addition to the G20 (mixed-age classes of 16+).				

Additional Costs

EXAM FEES

B2 First/C1 Advanced (18+ years old)	Contact LSI Cambridge
IELTS	Contact LSI Cambridge

OTHER FEES

Registration fee	90
Placement fee for volunteering in the UK (charities experience)	Contact LSI Cambridge
Courier fee	90
Health insurance p/wk	Contact LSI Cambridge
Airport transfer one way	
Heathrow	190
Gatwick	215
Stansted	120
Luton	130

Accommodation

HOMESTAY (Prices per person p/wk)	B&B	HB
Single room	175	225
Twin room*	155	200

Supplements (Prices per person p/wk)

Special diets B&B/HB	40/50
Summer (Jun 16 - Aug 25)	45
Christmas Supplement (Dec 23 - Jan 1 2025)	60

RESIDENCE (Prices per person p/wk)

The Willows (Self catering, all year)	From
Single	255
Single with shower	275
Executive single, ensuite	295
Studio	335

Accommodation prices are subject to change throughout the year. Therefore, it is important to contact LSI Cambridge to confirm the prices at the time of your exchange programme.

The arrival and departure dates for the homestay are Sunday to Sunday.

* When two students book for the same start and end date.

Other accommodation options available at www.lsi.edu/accommodation

Additional Course Information

Class size: Max 15 students.

Lesson duration: 50 min (45 min for Premium Courses).

General Courses & Business English

Start dates for Elementary to Advanced levels: Every Monday.

Academic Term Abroad (ATA)/Academic Year Abroad (AYA)

Start dates: First Monday of Jan, Apr and Sep.

Academic English/TOEFL & IELTS

Start dates: First Monday of Jan, Apr and Sep.

Exams are provided by third parties. For exam prices & test-centre locations, please contact LSI Cambridge.

Cambridge English Exam Preparation

Start dates: B2: Mar 18 - 10 wks; Jul 29 - 4 wks; Sep 23: B2 - 8 wks

C1: Mar 18 - 10 wks; Jul 29 - 4 wks; Sep 23: C1 - 8 wks

Exam dates: B2 First: May 25, Aug 23, Nov 16

C1 Advanced: May 25th, Aug 23, Nov 16

**Computer-based exam.

The exam dates are paper-based or computer based.

Please be aware that all dates are subject to change at short notice based on demand.

Premium Courses

Start dates for One-to-one: Every Monday.

Start dates for 9 Day Compact: Every Saturday.

Club 40+ Experience

Start dates: Mar 4 - 4 weeks; May 7th - 4 weeks; Sep 2 - 4 weeks; Nov 4 - 4 weeks.

Students can join the programme every Monday within the 4-week course period.

†Start date due to UK public holiday.

Public Holidays

No instruction on the following dates: Jan 1, Mar 29, Apr 1, May 6, 27, Aug 26.

Christmas & New Year: School is closed from Dec 23 2024 to Jan 1 2025 inclusive.

2025: School reopens on Jan 2.

To obtain further information, please contact the school directly.

www.lsi.edu/yl-cambridge

Junior Courses

Registration fee	90
English Programmes (Prices per person p/wk)	
Tuition only for ages 9-11 ¹ and 12-17 ²	340
Tuition, lunch + activities for ages 12-17 only ²	620
English Programme+full board homestay, twin room accommodation for ages 12-17 years ²	
Winter for groups only	805
Summer for groups only	870
English Programme+full board residential accommodation at Abbey College for ages 9-17 years ²	
Single room, ensuite (summer only)	1165
Future Leaders Programme+full board residential accommodation at Abbey College for ages 14-17 years ²	
Summer for groups and individuals	1255
Airport transfer required one way	
Heathrow/London City	190
Gatwick	215
Stansted	120
Luton	130
Check-in service ³	80

¹ Students will generally be classed in groups aged 9-12 and 13-17. Classes may occasionally cross these age ranges if of academic benefit. Ages 9-11 are only accepted if accompanied by an elder sibling, guardian or group leader.

² Travel costs included.

³ Compulsory fee for unaccompanied minors under 16, optional for juniors aged 16-17 years.

Class size: 18 students.

Lesson duration: 50 min.

Start dates (Homestay)

Every Monday from:

Winter 2024: Jan 8 to Jan 29 (course ends Feb 2, students depart Feb 3). GROUPS ONLY.

Summer 2024: Jul 1 to Aug 5 (course ends Aug 9, students depart Aug 10). GROUPS ONLY.

Winter 2025: Jan 6 to Feb 3 (course ends Feb 7, students depart Feb 8). GROUPS ONLY.

Start dates (Residence)

Every Monday from:

Summer 2024: Jul 1 to Aug 5 (course ends Aug 9, students depart Aug 10). GROUPS & INDIVIDUALS.

Additional course information

Standard timetable: Arrivals are on Sunday and departures are on Saturday. The maximum booking length for accommodation homestay is 4 weeks (27 nights) for individuals under 16 years old.

Junior Courses for Groups

In addition to our published start dates, the school can accommodate groups of various age ranges at different times throughout the year. Maximum class sizes for closed groups are negotiable. One group leader may accompany each group of 15 students for free, including transfers, accommodation, and activities. For any additional leaders accompanying groups with fewer than 15 students, there will be a charge.

New York (\$US)

www.lsi.edu/ny

General/Academic/English for Specific Purposes

	ACADEMIC TERM ABROAD	ACADEMIC YEAR ABROAD	
No. of weeks. Prices p/wk	1-3	4-11	12-23 24+
Afternoon 10 [^]	255	225	
General 20	475	455	435 400
Intensive 25	545	515	490 455
Intensive 30	595	565	535 490
Academic English 30			535 490
Business English 30 ^{>}	595	565	535 490
TOEFL 30/IELTS 30 ^{>}	595	565	535 490
No. of weeks. Course Prices		8 10	12
Cambridge 30 Exam Preparation		4520	5650 6420
No. of weeks. Prices p/wk			1-4
English for Public Speaking & Presentations ^{>>}			550
Prices p/wk			
English for Teaching Closed groups only			595
English for Teaching G20 + 5 individuals			975
English for Teaching G20 + 10 individuals			1475
SAT/GMAT Groups only			595
Personalised Programme Tailor-made courses available upon request. (e.g. fashion, social media etc.)			Contact LSI NY
One to One Lesson price p/lesson			100
Plus Courses Supplement 5/10 lessons			500/1000

[^] Not available on a Student Visa.

[>] Options also available as Intensive 25.

^{>>} This is a premium certificate course in a small group of 5 students. This course can be taken independently, or in addition to General 20.

Premium Courses

One-to-one			
No of lessons p/wk:	20	30	40
Course price	2000	3000	4000
Mini Group (Business/General English/Exam Prep)			
No of lessons p/wk:		20	30
Course prices	1 wk	1095	1590
	2 wks	1070	1565
	3 wks	1065	1525
	4+ wks	1055	1490

Club 40+ Experience

No. of weeks. Prices p/wk			1-4
3 activities supplement			400
Please note that these activities are supplementary and exclusively for students aged 40+. This programme needs to be booked in addition to the G20 (mixed-age classes of 16+).			

Additional Costs

OTHER FEES

Registration fee	175
Courier fee	90
Health insurance p/wk	35
Health insurance (65+) p/wk	70
Airport transfer one way	175
Airport transfer U18 supplement	55

Accommodation

Placement fee				150
HOMESTAY (Prices per person p/wk)	Twin B&B [*]	Single B&B	Twin HB [*]	Single HB
Manhattan [†]	525	570		
Brooklyn, Queens zone 1	395	440	455	510
Staten Island zone 2 ¹	295	340	355	410
Extra Nights Supplements²	Twin B&B [*]	Single B&B	Twin HB [*]	Single HB
Manhattan [†]	115	145		
Brooklyn, Queens zone 1	95	115	105	125
Staten Island zone 2 ¹	80	90	90	105
Other Supplements (Per person p/wk)				
Special diets B&B/HB				25/50
Summer (Jun 16 - Aug 25)				40
Christmas Supplement (Dec 23 - Dec 29)				60
Extra night in an executive room B&B/HB ²				140/160
Executive room private bathroom (en-suite or sole use)				185
RESIDENCE (Per person p/wk, 3 weeks maximum)				
YMCA Residence[*], West Side				
Single, semi-private washroom				800
Single, shared bathroom				730
Twin, shared bathroom [*]				470

^{*}Includes access to sports and fitness facilities. No meals are included.

Accommodation prices are subject to change throughout the year. Therefore, it is important to contact LSI NY to confirm the prices at the time of your exchange programme.

The arrival and departure dates for the homestay are either Saturday to Saturday or Sunday to Sunday.

^{*} When two students book for the same start and end date.

¹ Please note that the availability for these areas is very limited.

² Extra nights subject to availability. Please check with the school before booking flight tickets. No extra nights during the summertime.

Other accommodation options available at www.lsi.edu/accommodation

Additional Course Information

Class size: Max 16 students.

Lesson duration: 50 min (50 min for Premium Courses).

General Courses, Business English

Start dates for all levels: Every Monday.

Start dates for Beginner level: First Monday of Feb, Apr, Jun, Sep, Nov.

Academic Term Abroad (ATA)/Academic Year Abroad (AYA)

Start dates: First Monday of Jan, Apr and Sep.

Academic English/TOEFL & IELTS

Start date: Every Monday. First Monday of Jan, Apr and Sep.

Exams are provided by third parties. For exam prices & test-centre locations, please contact LSI NY.

Cambridge English Exam Preparation

Start dates: B2: Mar 18 - 10 wks; Jun 3 - 12 wks; Sep 23 - 8 wks

C1: Mar 18 - 10 wks; Jun 3 - 12 wks; Sep 23 - 8 wks

Please be advised that classes will only be conducted if there are a minimum of 5 students.

Exam dates: B2 First: May 25, Aug 23, Nov 16

C1 Advanced: May 25^{**}, Aug 23, Nov 16

^{**} Computer-based exam.

The exam dates are paper-based or computer based.

Please be aware that all dates are subject to change at short notice based on demand.

English for Public Speaking & Presentations

Start Dates: 4 modules in total. Each week, a new module.

Module 1: Jan 8, Jul 1, and Sep 3^{***}

Module 2: Jan 16^{***}, Jul 8, and Sep 9

Module 3: Jan 22, Jul 15, and Sep 16

Module 4: Jan 29, Jul 22, and Sep 23

^{***}Start date due to public holiday.

Please note that students can join the lessons every Monday.

SAT/GMAT, English for Teaching

Start dates: contact LSI NY.

Premium Courses

Start dates (one-to-one, Mini Group): Every Monday.

Club 40+ Experience

Start dates: Mar 4 - 4 weeks; May 6 - 4 weeks; Sep 3[†] - 4 weeks; Nov 4 - 4 weeks.

Students can join the programme every Monday within the 4-week course period.

[†]Start date due to public holiday.

Public Holidays

No instruction on the following dates: Jan 1, Jan 15, Feb 19, Mar 29, Apr 1, May 27, Jun 19, Jul 4, Sep 2, Oct 14, Nov 11, Nov 28, Nov 29.

Christmas & New Year: School is closed from Dec 23 2024 to Jan 1 2025 inclusive.

To obtain further information, please contact the school directly.

San Francisco/Berkeley (\$US)

www.lsi.edu/berkeley

General/Academic/English for Specific Purposes

	ACADEMIC TERM ABROAD	ACADEMIC YEAR ABROAD		
No. of weeks. Prices p/wk	1-3	4-11	12-23	24+
Afternoon 10 ^	230	220		
General 20	445	425	400	370
Intensive 25	505	480	455	420
Intensive 30	570	540	505	465
Academic English 30			505	465
Business English 30 ^	570	540	505	465
TOEFL 30/IELTS 30 ^	570	540	505	465
Groups only / Prices p/wk				
English for Teaching				570
SAT/GMAT				570
One to One Lesson price p/lesson				95
Plus Courses Supplement 5/10 lessons				475/950
^ Not available on a Student Visa.				
> Options also available as Intensive 25.				

Premium Courses

One-to-one				
No of lessons p/wk:			5	10
Course price			475	950
Mini Group (Business/General English/Exam Prep)				
No of lessons p/wk:			20	30
Course prices		1 wk	1075	1580
		2 wks	1055	1540
		3 wks	1030	1500
		4+ wks	1010	1470

Additional Costs

EXAM FEES*

TOEFL	Contact LSI Berkeley
-------	----------------------

*Exams are provided by third parties. For exam prices & test-centre locations, please contact LSI Berkeley.

OTHER FEES

Registration fee	175
Courier fee	90
Health insurance p/wk	35
Health insurance (65+) p/wk	70
Airport transfer one way	135

Accommodation

Placement fee		150
HOMESTAY (Prices per person p/wk for 1+ weeks)		
	B&B	HB
Single room	320	395
Twin room*	275	345
Supplements (Prices per person p/wk)		
Special diets B&B/HB		25/50
Summer (Jun 16 - Aug 25)		40
Christmas Supplement (Dec 23 - Dec 29)		60
Executive room private bathroom (en-suite or sole use)		90

RESIDENCE (Prices per person p/wk)

Downtown Berkeley - YMCA[#]	From
Single room, shared bathroom	365

Accommodation prices are subject to change throughout the year. Therefore, it is important to contact LSI Berkeley to confirm the prices at the time of your exchange programme.

Arrival and departure dates for Homestay: Saturday to Saturday or Sunday to Sunday.

* When two students book for the same start and end date.

[#] A \$250 refundable security deposit will be charged upon arrival at the residence. Additionally, a \$200 non-refundable move-in fee will be charged.

Other accommodation options available at www.lsi.edu/accommodation

Additional Course Information

Class size: Max 16 students.

Lesson duration: 50 min (50 min for Premium Courses).

General Courses, Business English

Start dates for Elementary to Advanced levels: Every Monday.

Academic Term Abroad (ATA)/Academic Year Abroad (AYA)

Start dates: Every Monday. First Monday of Jan, Apr and Sep.

Academic English/TOEFL & IELTS

Start dates: Every Monday. First Monday of Jan, Apr and Sep.

Exams are provided by third parties. For exam prices & test-centre locations, please contact LSI Berkeley.

SAT/GMAT, English for Teaching

Start dates: Contact LSI Berkeley

Premium Courses

Start dates (one-to-one & Mini Group): Every Monday.

Public Holidays

No instruction on the following dates: Jan 1, Jan 15, Feb 19, Mar 29, Apr 1, May 27, Jun 19, Jul 4, Sep 2, Oct 14, Nov 11, Nov 28, Nov 29.

Christmas & New Year: School is closed from Dec 23 2024 to Jan 1 2025 inclusive.

To obtain further information, please contact the school directly.

www.lsi.edu/yl-berkeley

Junior Courses

Registration fee	175
English Programmes for ages 12-17 years (Prices per person p/wk)	
Winter tuition only	470
Summer tuition only	490
Winter tuition, lunch + activities ¹	940
Summer tuition, lunch + activities ¹	970
English Programme+full board homestay in a twin room accommodation for ages 12-17 years	
Winter	1380
Summer	1460
Health Insurance required p/wk	35
Airport transfer required one way	135
Airport transfer U18 supplement	60

¹ Travel costs included.

² For unaccompanied minors prices available on request.

³ There is a compulsory fee for unaccompanied minors under the age of 16.

Class size: 18 students.

Lesson duration: 50 min.

Start dates

Every Monday from:

Winter 2024: Jan 8 to Jan 29 (course ends Feb 2, students depart Feb 3) GROUPS ONLY.

Summer 2024: Jun 24 to Aug 12 (course ends Aug 16, students depart Aug 17) GROUPS ONLY.

Winter 2025: Jan 6 to Feb 3 (course ends Feb 7, students depart Feb 8) GROUPS ONLY.

Additional course information

Standard timetable: Arrivals are on Sunday and departures are on Saturday.

Junior Courses for Groups

In addition to our published start dates, the school can accommodate groups of various age ranges at different times throughout the year. Maximum class sizes for closed groups are negotiable. One group leader may accompany each group of 10 to 15 students for free, including transfers, accommodation, and activities. For any additional leaders accompanying groups with fewer than 15 students, there will be a charge.

Boston (\$US)

www.lsi.edu/boston

General/Academic/English for Specific Purposes

	ACADEMIC TERM ABROAD	ACADEMIC YEAR ABROAD		
No. of weeks. Prices p/wk	1-3	4-11	12-23	24+
Afternoon 10 [^]	230	220		
General 20	445	425	400	370
Intensive 25	505	480	455	420
Intensive 30	570	540	505	465
Academic English 30			505	465
Business English 30 [^]	570	540	505	465
TOEFL 30/IELTS 30 [^]	570	540	505	465
No. of weeks. Course Prices	4	8	10	12
Cambridge 30 Exam Preparation	2160	4320	5400	6060
Prices p/wk				
SAT/GMAT				570
English for Teaching Closed groups only				570
English for Teaching G20 + 5 individuals				945
English for Teaching G20 + 10 individuals				1440
Personalised Programme Tailor-made courses available upon request. (e.g. fashion, social media etc.)			Contact LSI Boston	
One to One Lesson				95
Plus Courses Supplement 5/10 lessons				475/950

[^] Not available on a Student Visa.

[^] Options also available as Intensive 25.

Premium Courses

One-to-one			
No of lessons p/wk:	5	10	20
Course price	475	950	1900
Mini Group (Business/General English/Exam Prep)			
No of lessons p/wk:	20	30	
Course prices	1 wk	1075	1580
	2 wks	1055	1540
	3 wks	1030	1500
	4+ wks	1010	1470

Additional Costs

EXAM FEES

B2 First/C1 Advanced	Contact LSI Boston
----------------------	--------------------

OTHER FEES

Registration fee	175
Courier fee	90
Health insurance p/wk	35
Health insurance (65+) p/wk	70
Airport transfer one way	135

Junior Courses

Registration fee	175
English Programmes for ages 12-17 years	(Per person p/wk)
Tuition only	Contact LSI Boston
Tuition + activities	Contact LSI Boston
Tuition + full board homestay + activities	Contact LSI Boston
Tuition + full board homestay + activities + weekend tours	Contact LSI Boston
Health Insurance required (p/wk)	35
Airport transfer required one way	135

Please note: Junior programmes in Boston are offered for closed groups only.

Accommodation

Placement fee	150
HOMESTAY (Prices per person p/wk for 1+ weeks)	B&B HB
Single room	285 365
Twin room*	255 315

Supplements (Prices per person p/wk)

Special diets B&B/HB	25/50
Summer (Jun 16 - Aug 25)	40
Christmas Supplement (Dec 23 - Dec 29)	60
Executive room private bathroom (en-suite or sole use)	90

RESIDENCE (Prices per person p/wk)

ESL Townhouse (No meals, 18 weeks minimum stay)	
Studio Apartment	from 675
2-Bedroom Apartment	from 778

Please note that accommodation prices are subject to changes throughout the year. It is important to contact

LSI Boston to confirm the prices at the time of your exchange programme.

The arrival and departure dates for the homestay are either from Saturday to Saturday or from Sunday to Sunday.

Arrival and departure dates for Residence: Saturday to Saturday.

* When two students book for the same start and end date.

Other accommodation options available at www.lsi.edu/accommodation

Additional Course Information

Class size: Max 16 students.

Lesson duration: 50 min (50 min for Premium Courses).

General Courses, Business English

Start dates for Elementary to Advanced levels: Every Monday.

Start dates for Beginner level: Jan 8, Apr 1, July 8, Oct 7.

Academic Term Abroad (ATA)/Academic Year Abroad (AYA))

Start dates: Every Monday. First Monday of Jan, Apr and Sep.

Academic English/TOEFL & IELTS

Start dates: Every Monday. First Monday of Jan, Apr and Sep.

Exams are provided by third parties. For exam prices & test-centre locations, please contact LSI Boston.

Cambridge English Exam Preparation

Start dates: B2: Mar 18 & May 13 - 10 wks; Jul 15 & Sep 23 - 8 wks, Nov 18 - 4wks

C1: May 7 - 12 wks; Jul 29 - 4 wks; Aug 26: C1 - 12 wks, Nov 18 - 4wks

C2: May 13 - 4wks; Oct 14 - 8 wks

Please be advised that classes will only be conducted if there are a minimum of 5 students.

Exam dates: B2 First: Mar 9, May 25, Jul 20, Sep 21, Nov 16, Dec 14

C1 Advanced: Mar 16, Jun 15, Jul 26, Aug 23, Nov 16, Dec 14

C2 Proficiency: Mar 2; Jun 8; Nov 30

The exam dates are paper-based. Computer-based exams may be subject to alternative dates upon request and availability of the center.

Please be aware that all dates are subject to change at short notice based on demand.

SAT/GMAT, English for Teaching

Start dates: contact LSI Boston.

Premium Courses

Start dates for One-to-one & Mini Group: Every Monday.

Public Holidays

No instruction on the following dates: Jan 1, Jan 15, Feb 19, Mar 29, Apr 1, May 27, Jun 19, Jul 4,

Sep 2, Oct 14, Nov 11, Nov 28, Nov 29.

Christmas & New Year: School is closed from Dec 23 2024 to Jan 1 2025 inclusive.

To obtain further information, please contact the school directly.

www.lsi.edu/yl-boston

Class size: 18 students.

Lesson duration: 50 min.

Start dates (Homestay)

Every Monday from:

Winter 2024: Jan 8 to Jan 29 (course ends Feb 2, students depart Feb 3). GROUPS ONLY.

Summer 2024: Jun 24 to Aug 12 (course ends Aug 16, students depart Aug 17). GROUPS ONLY.

Winter 2025: Jan 6 to Feb 3 (course ends Feb 7, students depart Feb 8). GROUPS ONLY.

Additional course information

Standard timetable: Arrivals are on Sunday and departures are on Saturday.

Junior Courses for Groups

In addition to our published start dates, the school can accommodate groups of various age ranges at different times throughout the year. Maximum class sizes for closed groups are negotiable. One group leader may accompany each group of 10 to 15 students for free, including transfers, accommodation, and activities. For any additional leaders accompanying groups with fewer than 15 students, there will be a charge.

General/Academic/English for Specific Purposes

	ACADEMIC TERM ABROAD	ACADEMIC YEAR ABROAD		
No. of weeks. Prices p/wk	1-3	4-11	12-23	24+
Afternoon 10 ^	230	220		
General 20	445	425	400	370
Intensive 25	505	480	455	420
Intensive 30	570	540	505	465
Academic English 30 Pathway Programme			505	465
Business English 30 ^	570	540	505	465
TOEFL 30/IELTS 30 ^	570	540	505	465
No. of weeks. Course Prices			10	12
Cambridge 30 Exam Preparation			5400	6060
Prices p/wk				
SAT/GMAT Groups only				570
Personalised Programme	Tailor-made courses available upon request.			
(e.g. fashion, social media etc.)			Contact LSI San Diego	
One to One Lesson price p/lesson				95
Plus Courses Supplement 5/10 lessons				475/950
^ Not available on a Student Visa.				
^ Options also available as Intensive 25.				

Premium Courses

One-to-one		
No of lessons p/wk:	10	20
Course price	950	1900
Mini Group (Business/General English/Exam Prep)		
No of lessons p/wk:	20	30
Course prices		
	1 wk	1070 1580
	2 wks	1055 1540
	3 wks	1030 1500
	4+ wks	1010 1470

Additional Costs

EXAM FEES	
B2 First/C1 Advanced	Contact LSI San Diego
OTHER FEES	
Registration fee	175
Courier fee	90
Health insurance p/wk	35
Health insurance (65+) p/wk	70
Airport transfer one way	150
Airport transfer U18 supplement	60

Accommodation

Placement fee	150	
HOMESTAY (Prices per person p/wk)		
	B&B	HB
Single room	280	360
Twin room*	250	310
Supplements (Prices per person p/wk)		
Special diets B&B/HB	25/50	
Summer (Jun 16 - Aug 25)	40	
Christmas Supplement (Dec 23 - Dec 29)	60	
Executive room private bathroom (en-suite or sole use)	90	

Please note that accommodation prices are subject to changes throughout the year. It is important to contact LSI San Diego to confirm the prices at the time of your exchange programme.
The arrival and departure dates for the homestay are either Saturday to Saturday or Sunday to Sunday.
* When two students book for the same start and end date.

Other accommodation options available at www.lsi.edu/accommodation

Additional Course Information

Class size: Max 16 students. Lesson duration: 50 min (50 min for Premium Courses).

General Courses, Business English
Start dates for Elementary to Advanced levels: Every Monday.
Start dates for Beginner level: Jan 8, Apr 1, Jul 8, Oct 7.

Pathway Programme, Academic Term Abroad (ATA)/Academic Year Abroad (AYA)
Start dates: First Monday of Jan, Apr and Sep.

Academic English, TOEFL & IELTS
Start dates: Every Monday.
Recommended start dates: First Monday of Jan, Apr and Sep.

Exams are provided by third parties. For exam prices & test-centre locations, please contact LSI San Diego.

Cambridge English Exam Preparation
Start dates: B2 & C1: Apr 2 - 12 wks; Sep 16 - 12 wks
Please be advised that classes will only be conducted if there are a minimum of 5 students.

Exam dates: B2 First: Jun 22 & Dec 10
C1 Advanced: Jun 22 & Dec 11

Exams are available as a computer-based or paper-based - depending on the chosen date.
Please be aware that all dates are subject to change at short notice based on demand.

SAT/GMAT
Start dates: contact LSI San Diego.

Premium Courses
Start dates (one-to-one & Mini Group): Every Monday.
Start dates (9 Day Compact): Every Saturday.

Public Holidays
No instruction on the following dates: Jan 1, Jan 15, Feb 19, Mar 29, Apr 1, May 27, Jun 19, Jul 4, Sep 2, Oct 14, Nov 11, Nov 28, Nov 29.
Christmas & New Year: School is closed from Dec 23 2024 to Jan 1 2025 inclusive.
To obtain further information, please contact the school directly.

Junior Courses

Registration fee	175
English Programmes (Prices per person p/wk)	
Winter tuition only for ages 6-11 ¹ & 12-17 years ²	465
Summer tuition only for ages 6-11 ¹ & 12-17 years ²	485
Winter or Summer English tuition, lunch + activities for ages 12-17 years ²	970
English Programme+full board homestay in a shared room accommodation for ages 12-17 years ²	
Winter for groups & individuals	1370
Summer for groups & individuals	1435
Health insurance required p/wk	35
Airport transfer required one way	210

¹ Please Note: Students aged 6-11 years must be accompanied by a parent or guardian. The programme for ages 6-11 includes tuition only. English tuition and activities packages may be available. Contact LSI San Diego for more information and prices.
² Compulsory fee for unaccompanied minors under 16.

Class size: 18 students.
Lesson duration: 50 min.

Start dates
Every Monday from:
Winter 2024: Jan 8 to Jan 29 (course ends Feb 2, students depart Feb 3). GROUPS & INDIVIDUALS.
Summer 2024: Jun 24 to Aug 12 (course ends Aug 16, students depart Aug 17). GROUPS & INDIVIDUALS.
Winter 2025: Jan 6 to Feb 3 (course ends Feb 7, students depart Feb 8). GROUPS & INDIVIDUALS.
Additional course information
Standard timetable: Arrivals are on Sunday and departures are on Saturday.
Junior Courses for Groups
In addition to our published start dates, the school can accommodate groups of various age ranges at different times throughout the year. Maximum class sizes for closed groups are negotiable. One group leader may accompany each group of 10 to 15 students for free, including transfers, accommodation, and activities. For any additional leaders accompanying groups with fewer than 15 students, there will be a charge.

Toronto (\$CD)

www.lsi.edu/toronto

General/Academic/English for Specific Purposes

	ACADEMIC TERM ABROAD	ACADEMIC YEAR ABROAD		
No. of weeks. Prices p/wk	1-3	4-11	12-23	24+
Afternoon 10^	215	210		24+
General 20	410	400	390	370
Intensive 25	455	445	435	405
Intensive 30	495	485	475	445
Academic English 30 Pathway Programme			475	445
Business English 30^	495	485	475	445
TOEFL 30/IELTS 30^	495	485	475	445
No. of weeks. Course Prices	8		10	12
Cambridge 30 Exam Preparation	3880		4850	5700
No. of weeks. Prices p/wk			1-4	1-8
English for Public Speaking & Presentations>>			585	
Medical English>> (10 lessons p/wk.)				585
Legal English>> (10 lessons p/wk.)				585
One to One Lesson price p/lesson				105
Plus Courses Supplement 5/10 lessons				525/1050

[^] Not available on a Study Permit.

[>] Options also available as Intensive 25.

^{>>} These are premium certificate courses in small groups of 5 students. These courses can be taken independently, or in addition to General 20.

Premium Courses

One-to-one				
No of lessons p/wk:	20	30	40	50
Course price	2100	3150	4200	5250
Mini Group (Business/General English/Exam Prep)				
No of lessons p/wk:		20	30	
Course prices		1 wk	1180	1565
		2 wks	1055	1385
		3 wks	1000	1335
		4+ wks	975	1305
9 Day Compact No of lessons:		82	92	
Course price		9040	10140	

Club 40+ Experience

No. of weeks. Prices p/wk	1-4
3 activities supplement	400

Please note that these activities are supplementary and exclusively for students aged 40+. This programme needs to be booked in addition to the G20 (mixed-age classes of 16+).

Additional Costs

EXAM FEES

B2 First/C1 Advanced	380
----------------------	-----

OTHER FEES

Registration fee	175
Textbook (Cambridge Exams)	90
Courier fee	115
Health insurance p/wk	35
Notary fees for unaccompanied minors (U18)	70
Airport transfer one way	130

www.lsi.edu/yl-toronto

Junior Courses

Registration fee	175
English Programmes (Prices per person p/wk)	
Tuition only for ages 6-11 ¹ & 12-17 years ²	440
Winter tuition, lunch + activities for ages 12-17 years only ²	910
Summer tuition, lunch + activities for ages 12-17 years only ²	970
English Programme+full board homestay in a twin room accommodation for ages 12-17 years ²	
Winter	1270
Summer	1330
English Programme+full board residential accommodation for ages 13-17 years ² (groups only)	
Single room (summer only)	2085
Airport transfer required one way	130
Health Insurance (p/wk)	35
Custodianship service available (if requested by Canadian Embassy) ²	70

¹ Students aged 6-11 years must be accompanied by a parent or guardian. The programme for ages 6-11 includes tuition only. English tuition and activities package may be available. Contact LSI Toronto for information and prices.

² Compulsory fee for unaccompanied minors under 16.

Accommodation

Placement fee	215
---------------	-----

HOMESTAY (Prices per person p/wk)	B&B	HB
Single room	245	280
Twin room*	230	270

Supplements (Prices per person p/wk)	
Special diets B&B/HB	30/50
Summer (Jun 16 - Aug 25)	80
Christmas Supplement (Dec 23 - Dec 29)	55
U18 Supplement	25
Executive room private bathroom (en-suite or sole use)*	90

RESIDENCE (Prices per person p/wk)	
Toronto Metropolitan University (May–Aug)	
Single room, private bathroom	from \$525

Casa Residences (\$250 placement fee required)	
Single room, shared bathroom / Twin room, shared bathroom*	\$425 / \$325

Please note that accommodation prices are subject to changes throughout the year. It is important to contact LSI Toronto to confirm the prices at the time of your exchange programme.

Arrival and departure dates for Homestay: Saturday to Saturday or Sunday to Sunday.

* Please check availability.

* When two students book for the same start and end date.

Other accommodation options available at www.lsi.edu/accommodation

Additional Course Information

Class size: Max 17 students.

Lesson duration: 50 min (50 min for Premium Courses).

General Courses, English for Business

Start dates for Elementary to Advanced levels: Every Monday.

Start dates for Beginner level: Jan 8, Apr 8, Jul 2, and Sep 30.

Pathway Programme/Academic Term Abroad (ATA)/Academic Year Abroad (AYA)

Start dates: First Monday of Jan, Apr and Sep.

Academic English/TOEFL & IELTS

Start dates: Every Monday. First Monday of Jan, Apr and Sep.

Exams are provided by third parties. For exam prices & test-centre locations, please contact LSI Toronto.

Cambridge English Exam Preparation

Start dates: B2: Mar 18 - 12 wks, Jul 2 - 8 wks, Sep 9 - 12 wks

C1: Mar 18 - 12 wks, Jul 2 - 8 wks, Sep 9 - 12 wks

Please be advised that classes availability are depending on demand.

Exam dates: B2 First: Jun 4, Aug 22 & Nov 26 C1 Advanced: Jun 5, Aug 23 & Nov 27

All exams are paper based.

Please be aware that all dates are subject to change at short notice based on demand.

English for Public Speaking & Presentations, Medical English, Legal English

Start Dates: EPS&P: 4 modules in total. Each week, a new module

Module 1: Jan 8, Jul 2** & Sep 3**

Module 2: Jan 15, Jul 8, and Sep 9

Module 3: Jan 22, Jul 15, and Sep 16

Module 4: Jan 29, Jul 22, and Sep 23

ME & LE: 8 modules in total. Each week, a new module.

Module 1: Jan 8, Jul 2** & Sep 3**

Module 8: Feb 26, Aug 19, and Oct 21

**Start date due to public holiday.

Students can join the lessons every Monday.

Premium Courses

Start dates (one-to-one, Mini Group): Every Monday.

Start dates (9 Day Compact): Every Saturday.

Club 40+ Experience

Start dates: Mar 4 - 4 weeks; May 6 - 4 weeks; Sep 3† - 4 weeks; Nov 4 - 4 weeks.

Students can join the programme every Monday within the 4-week course period.

†Start date due to public holiday.

Public Holidays

No instruction on the following dates: Jan 1, Feb 19, Mar 29, Apr 1, May 20, Jul 1, Aug 5, Sep 2, 30, Oct 14, Nov 11.

Christmas & New Year: School is closed from Dec 23 to 27 2024 inclusive, and Jan 1 2025.

Class size: 18 students.

Lesson duration: 50 min.

Start dates (Homestay):

Every Monday from:

Winter 2024: Jan 8 to Jan 29 (course ends Feb 2, students depart Feb 3). GROUPS ONLY.

Summer 2024: Jun 24 to Aug 12 (course ends Aug 16, students depart Aug 17). GROUPS & INDIVIDUALS.

Winter 2025: Jan 6 to Feb 3 (course ends Feb 7, students depart Feb 8). GROUPS ONLY.

Start dates (Residence):

Every Monday from:

Summer 2024: Jul 1 to Aug 5 (course ends Aug 9, students depart Aug 10). GROUPS ONLY.

Additional course information

Standard timetable: Arrivals are on Sunday and departures are on Saturday.

Junior Courses for Groups

In addition to our published start dates, the school can accommodate groups of various age ranges at different times throughout the year. Maximum class sizes for closed groups are negotiable. One group leader may accompany each group of 10 to 15 students for free, including transfers, accommodation, and activities. For any additional leaders accompanying groups with fewer than 15 students, there will be a charge.

Vancouver (\$CD)

www.lsi.edu/vancouver

General/Academic/English for Specific Purposes

	ACADEMIC TERM ABROAD	ACADEMIC YEAR ABROAD		
No. of weeks. Prices p/wk	1-3	4-11	12-23	24+
Afternoon 10[^]	215	210		
General 20	410	400	390	370
Intensive 25	455	445	435	405
Intensive 30	495	485	475	445
Academic English 30 Pathway Programme			475	445
Business English 30[~]	495	485	475	445
TOEFL 30/IELTS 30^{>}	495	485	475	445
No. of weeks. Course Prices	8	10	12	
Cambridge 30 Exam Preparation	3880	4850	5700	
One to One Lesson price p/lesson				105
Plus Courses Supplement 5/10 lessons			525/1050	

[^] Not available on a Student Visa.

[>] Options also available as I25.

Premium Courses

One-to-one				
No of lessons p/wk:	20	30	40	50
Course price	2100	3150	4200	5250

Mini Group (Business/General English/Exam Prep)				
No of lessons p/wk:		20	30	
Course prices	1 wk	1180	1565	
	2 wks	1055	1385	
	3 wks	1000	1335	
	4+ wks	975	1305	

9 Day Compact No of lessons:	82	92
Course price	9040	10140

Club 40+ Experience

No. of weeks. Prices p/wk	1-4
3 activities supplement	400

Please note that these activities are supplementary and exclusively for students aged 40+. This programme needs to be booked in addition to the G20 (mixed-age classes of 16+).

Additional Costs

EXAM FEES

B2 First/C1 Advanced/C2 Proficiency	Contact LSI Vancouver
-------------------------------------	-----------------------

OTHER FEES

Registration fee	175
Textbook (Cambridge Exams)	90
Courier fee	115
Health insurance p/wk	35
Notary fees for unaccompanied minors (U19)	70
Airport transfer one way	130

Accommodation

Placement fee	215
---------------	-----

HOMESTAY (Prices per person p/wk)	B&B	HB
Single room	245	280
Twin room*	230	270

Supplements

Special diets B&B/HB	30/50
Summer (Jun 16 - Aug 25)	80
Christmas Supplement (Dec 23 - Dec 29)	55
U18 Supplement	25
Executive room private bathroom (en-suite or sole use)**	90

RESIDENCE (Prices per person p/wk)

YWCA Residence*	
Single room, shared bathroom	from 770

Please note that accommodation prices are subject to changes throughout the year. It is important to contact LSI Vancouver to confirm the prices at the time of your exchange programme.

Arrival and departure dates for Homestay: Saturday to Saturday or Sunday to Sunday.

** Please check availability.

* When two students book for the same start and end date.

*A \$230 non-refundable placement fee will be charged.

Other accommodation options available at www.lsi.edu/accommodation

Additional Course Information

Class size: Max 17 students.

Lesson duration: 50 min (50 min for Premium Courses).

General Courses & English for Business

Start dates for Elementary to Advanced levels: Every Monday.

Start dates for Beginner level: Jan 8, Apr 8, Jul 2, and Sep 30.

Pathways/Academic Term Abroad (ATA)/Academic Year Abroad (AYA)

Start dates: First Monday of Jan, Apr and Sep.

Academic English/TOEFL & IELTS

Start dates: Every Monday. First Monday of Jan, Apr and Sep.

Exams are provided by third parties. For exam prices & test-centre locations, please contact LSI Vancouver.

Cambridge English Exam Preparation

Start dates: B2: Mar 18 - 12 wks, Jul 2 - 8 wks, Sep 9 - 12 wks

C1: Mar 18 - 12 wks, Jul 2 - 8 wks, Sep 9 - 12 wks

Please be advised that classes availability are depending on demand.

Exam dates: B2 First: Jun 4, Aug 22 & Nov 26

C1 Advanced: Jun 5, Aug 23 & Nov 27

All exams are paper based.

Please be aware that all dates are subject to change at short notice based on demand.

Premium Courses

Start dates (one-to-one, Mini Group): Every Monday.

Start dates (9 Day Compact): Every Saturday.

Club 40+ Experience

Start dates: Mar 4 - 4 weeks; May 6 - 4 weeks; Sep 3[†] - 4 weeks; Nov 4 - 4 weeks.

Students can join the programme every Monday within the 4-week course period.

[†]Start date due to public holiday.

Public Holidays

No instruction on the following dates: Jan 1, Feb 19, Mar 29, Apr 1, May 20, Jul 1, Aug 5, Sep 2, 30, Oct 14, Nov 11.

Christmas & New Year: School is closed from Dec 23 to 27 2024, inclusive, and Jan 1 2025.

To obtain further information, please contact the school directly.

www.lsi.edu/yl-vancouver

Junior Courses

Registration fee	175
-------------------------	------------

English Programmes for ages 12-17 years¹ (Prices per person p/wk)

English tuition only	440
Winter tuition, lunch + activities	910
Summer tuition, lunch + activities	970

English Programme+full board homestay in a twin room accommodation for ages 12-17 years¹

Winter	1270
Summer	1330
Health Insurance required (p/wk)	35

Airport transfer required one way	130
--	-----

Custodianship service available (if requested by Canadian Embassy) ¹	70
--	----

¹ Compulsory fee for unaccompanied minors under 16.

Class size: Max 18 students.

Lesson duration: 50 min.

Start dates (Homestay):

Every Monday from:

Winter 2024: Jan 8 to Jan 29 (course ends Feb 2, students depart Feb 3). GROUPS ONLY.

Summer 2024: Jun 24 to Aug 12 (course ends Aug 16, students depart Aug 17). GROUPS & INDIVIDUALS.

Winter 2025: Jan 6 to Feb 3 (course ends Feb 7, students depart Feb 8). GROUPS ONLY.

Additional course information

Standard timetable: Arrivals are on Sunday and departures are on Saturday.

Junior Courses for Groups

In addition to our published start dates, the school can accept groups for a variety of age ranges at various times throughout the year. Maximum class sizes for closed group, subject to negotiation. One group leader may accompany each group of 10-15 students for free (including transfers, accommodation and activities).

Auckland (\$NZ)

General/Academic/English for Specific Purposes

	ACADEMIC TERM ABROAD	ACADEMIC YEAR ABROAD		
No. of weeks. Prices p/wk	1-3	4-11	12-23	24+
Afternoon 10 ^	220	215		
General 20	425	420	415	
Intensive 24	480	475	470	460
Evening Intensive 24	480	475	470	460
Intensive 30	540	535	530	515
Academic English 30			530	515
Business English 30 ^	540	535	530	515
TOEFL 30/IELTS 30 ^	540	535	530	515
No. of weeks. Course Prices		8	10	12
Cambridge 30 Exam Preparation >>		4280	5350	6360
No. of weeks. Prices p/wk			1-4	1-8
English for Public Speaking & Presentations >>>			755	
Medical English >>> (10 lessons p/wk.)				755
Legal English >>> (10 lessons p/wk.)				755
Groups option available. Prices p/wk				
English for Aviation G20 + 5 individuals (p/wk)				975
English for Aviation G20 + 10 individuals (p/wk)				1525
English for Teaching G20 + 5 individuals (p/wk)				1000
English for Teaching G20 + 10 individuals (p/wk)				1580
One to One Lesson price p/lesson				110
Plus Courses Supplement 5/10 lessons				550/1100

[^] Not available on a Student Visa.
[>] Options also available as Intensive 24.
^{>>} Option also available as I24 and G20.
^{>>>} These are premium certificate courses in small groups of 5 students. These courses can be taken independently, or in addition to General 20.

Premium Courses

One-to-one						
No of lessons p/wk:	5	10	20	30	40	50
Course price	550	1100	2200	3300	4400	5500
Mini Group (Business/General English/Exam Prep)						
No of lessons p/wk:						20
Course prices					1 wk	1510
					2 wks	1405
					3 wks	1365
					4+ wks	1345

Club 40+ Experience

No. of weeks. Prices p/wk	1-4
3 activities supplement	490

Please note that these activities are supplementary and exclusively for students aged 40+. This programme needs to be booked in addition to the G20 (mixed-age classes of 16+).

Experiences

No. of weeks. Course prices	2
English with Barista Training	600

Additional Costs

EXAM FEES Prices p/person, p/exam	
B2 First/C1 Advanced/C2 Proficiency	425
TOFEL/IELTS	Contact LSI Auckland

An extra fee applies for reservations less than 6 weeks before exam date.

OTHER FEES

Registration fee	215
Course materials p/wk up to max. 20 wks per booking	20
Demi au pair placement fee	Contact LSI Auckland
Courier fee	135
Health insurance p/wk	Contact LSI Auckland
Airport transfer one way	120
Airport transfer one way (U18) [†]	135

[†] Compulsory for U18. U18 students must book both arrival and departure transfers with LSI (roundtrip).

Accommodation

Placement fee		315
HOMESTAY (Prices per person p/wk)	B&B	HB
Single/Twin room [‡]	305	380
Single room under 18s		390
Supplements (Prices per person p/wk)		
Special diets B&B/HB		35/70
Christmas (Dec 23 - Jan 3 2025)		80
Executive room private bathroom (en-suite or sole use)		80
Winter fuel supplement (July 1st to September 30th)		25
RESIDENCE (Prices per person, p/wk)		
City Lodge (No meals)		
Single room, private bathroom		445
Double room, private bathroom [‡]		260
Twin room (2 beds), private bathroom [‡]		265
YMCA (no meals)		
Single room		385

Accommodation prices are subject to change throughout the year. Therefore, it is important to contact LSI Auckland to confirm the prices at the time of your exchange programme.
Arrival and departure dates for Homestay: Saturday to Saturday or Sunday to Sunday.

[‡] When two students book for the same start and end date.
Please note that meals are not included for residences.

Other accommodation options available at www.lsi.edu/accommodation

Additional Course Information

Class size: Max 16 students.
Lesson duration: 50 min (45 min for Premium Courses).

General Courses & Business English

Start dates for Elementary to Advanced levels: Every Monday.
Start dates for Beginner level: First Monday of Jan, Mar, May, Jul, Sep, Nov.

Evening Intensive

Start dates for Elementary+ to Advanced: Every Monday.
Beginners to Elementary levels will need to study in the morning programme until reaching the acceptable level.

Academic Term Abroad (ATA)/Academic Year Abroad (AYA)

Start date: First Monday of Jan, Apr and Sep.

Academic English/TOEFL & IELTS

Start dates: Every Monday. First Monday of Jan, Apr and Sep.
Exams are provided by third parties. For exam prices & test-centre locations, please contact LSI Auckland.

Cambridge Exam Preparation

Start dates: B2: Jan 8 & Mar 25 - 10 wks; Sep 9 - 12 wks
C1: Jan 8 & Mar 25 - 10 wks; Sep 2 -12 wks
C2: Jan 8 - 8 wks; Apr 8 & Sep 23 - 10 wks

Please be advised that classes will only be conducted if there are a minimum of 5 students.

Exam dates: B2 First: Mar 15, 16, Jun 4, Nov 26
C1 Advanced: Mar 15, 16, Jun 5, Nov 27

Both computer-based and paper-based exam dates are available. Please check the options with LSI Auckland.
Please be aware that all dates are subject to change at short notice based on demand.

English for Public Speaking & Presentations, Medical English, Legal English

Start Dates: EPS&P: 4 modules in total. Each week, a new module
Module 1: Sep 2
Module 2: Sep 9
Module 3: Sep 16
Module 4: Sep 23

ME & LE: 8 modules in total. Each week, a new module.
Module 1: Sep 2
Module 8: Oct 21

Please note that students can join the lessons every Monday. For more information on module start dates, please contact LSI Auckland.

English for Aviation, English for Teaching

Start date: Contact LSI Auckland.

Premium Courses

Start dates: Every Monday.

Club 40+ Experience

Start dates: Mar 4 - 4 weeks; May 7[†] - 4 weeks; Sep 2 - 4 weeks; Nov 4 - 4 weeks.
Students can join the programme every Monday within the 4-week course period.

[†]Start date due to UK public holiday.

Public Holidays

No instruction on the following dates: Jan 1 to 5, 29, Feb 6, Mar 29, Apr 1, 25, Jun 3, 28, Oct 28.
Christmas & New Year: School is closed from Dec 23 2024 to Jan 3 2025 inclusive.

2025: School reopens on Jan 6.

To obtain further information, please contact the school directly.

Brisbane (\$AU)

www.lsi.edu/brisbane

General/Academic/English for Specific Purposes

	ACADEMIC TERM ABROAD	ACADEMIC YEAR ABROAD		
No. of weeks. Prices p/wk	1-3	4-11	12-23	24+
Afternoon 10 [^]	220	210		
General 20 (Up to 17 wks) [^]	410	400	390	370
Intensive 24	480	470	460	435
Intensive 30	525	515	505	475
BEC Vantage (Business English Certificate) 30	525	515	505	475
IELTS 30 Exam Preparation	525	515	505	475
No. of weeks. Course Prices				12
Intensive 30 with Cambridge Exam Preparation				6060
One to One Lesson price p/lesson				125
Plus Courses Supplement 5/10 lessons				625/1250

[^] Not available on a Student Visa.

Premium Courses

One-to-one				
No of lessons p/wk:	20	30	40	50
Course price	2500	3750	5000	6250

Experiences

1 day training session	
English with Barista Training	149

Additional Costs

EXAM FEES

B2 First/C1 Advanced	Contact LSI Brisbane
IELTS	Contact LSI Brisbane

OTHER FEES

Registration fee	260
Course materials p/wk (up to a max. of 20 wks)	15
Demi Au Pair placement fee	Contact LSI Brisbane
Courier fee	90
Overseas student health Insurance p/wk	Contact LSI Brisbane
Airport transfer one way[†]	140

[†] Compulsory for U18. U18 students must book both arrival and departure transfers with LSI (roundtrip).

Accommodation

Placement fee		300
HOMESTAY (Prices per person p/wk)	B&B	HB
Single/Twin room*	300	375
Supplements (Prices per person p/wk)		
Special diets B&B/HB		60/75
Executive room private bathroom (en-suite or sole use)		75
U18 Full Board (p/wk)		95

RESIDENCE (Prices per person, p/wk)

Adalong Student Guesthouse	
Single B&B, shared bathroom**	Contact LSI Brisbane

Please note that accommodation prices are subject to changes throughout the year. It is important to contact LSI Brisbane to confirm the prices at the time of your exchange programme.

Arrival and departure dates for Homestay: Saturday to Saturday or Sunday to Sunday.

* When two students book for the same start date.

**Breakfast is provided Monday to Friday, public holidays and weekends. A barbecue may be available for students to use on weekends.

Rooms with shared bathroom.

Other accommodation options available at www.lsi.edu/accommodation

Additional Course Information

Class size: Max 18 students.

Lesson duration: 50 min (45 min for Premium Courses).

General Courses, Intensive Courses

Start dates for Elementary to Advanced levels: Every Monday.

Start dates for Beginner level: First Monday of Jan 8, Apr 1, July 1, Oct 7.

* Elective only and only offered for I30 students.

Intensive 30 with Cambridge Exam Preparation and BEC Vantage

Start dates: B2 & C1: Apr 2 - 12 wks

B2 & C1: Sep 16 - 12 wks

Please be advised that classes will only be conducted if there are a minimum of 5 students.

Exam dates: B2 First: Jun 22 & Dec 10

C1 Advanced: Jun 22 & Dec 11

The exam dates are paper-based. Computer-based exams may be subject to alternative dates upon request and availability of the center.

For exam prices & test-centre locations, please contact LSI Brisbane.

Please be aware that all dates are subject to change at short notice based on demand. To obtain further information, please contact the school directly.

IELTS Exam Preparation

Start dates: Jan 8 & Jun 24

Exam dates: Mar 30 & Sep 14

Exams are provided by third parties. For exam prices & test-centre locations, please contact LSI London.

Premium Courses

Start dates (one-to-one): Every Monday.

Public Holidays

No instruction on the following dates: Jan 1 to 5, 26, Mar 29, 30, 31, Apr 1, 25, May 6, Aug 14, Oct 7. Christmas & New Year: School is closed from Dec 23 2024 to Jan 3 2025 inclusive.

2025: School reopens on Jan 6.

To obtain further information, please contact the school directly.

CRICOS Provider 01678A

Paris (€)

www.lsi.edu/paris

General/Academic

	ACADEMIC TERM ABROAD	ACADEMIC YEAR ABROAD		
No. of weeks. Prices p/wk	1-3	4-11	12-23	24+
Afternoon 10[^]	200	180		
General 20[#]	400	360	340	315
Intensive 24	450	415	390	365
Intensive 30	500	465	440	415
Academic French 30				415
No. of weeks. Course prices	2	4	8	12
TEF (2 wks course)	1010	1870	3740	5290
No. of weeks				8
DEL F (course price)				3740
CCIP (course price)				3740
Personalised Programme Tailor-made courses available upon request. (e.g. fashion, social media, olympic history, etc)				
				Contact LSI Paris
One to One Lesson price p/lesson				100
Plus Courses Supplement 5/10 lessons				500/1000

[^] Not available on a Student Visa.

[#] Not available to student visa holders from some countries. Check with your embassy.

Premium Courses

One-to-one				
No of lessons p/wk:	20	30	40	50
Course price	2000	3000	4000	5000
9 Day Compact No of lessons:			82	92
Course price			8610	9660

French Experiences

2 wks Course. Price per person p/wk	
Cooking	1020
History of Art	1110

Additional Costs

EXAM FEES	
DEL F A2/B1	265
DEL F B2	320
e-TEF Compulsory	155
OTHER FEES	
Registration fee	105
Courier fee	130
Airport transfer	Contact LSI Paris
Roissy CDG/Orly	125

Accommodation

Placement fee			105
HOMESTAY (zone 1-2, prices per person p/wk)	B&B	Semi HB [†]	HB
Single room	270	340	370
Twin room*	240	300	330
Supplements (Prices per person p/wk)			
Executive room private bathroom (en-suite or sole use)			55
RESIDENCE (prices per person, p/wk)			
Séjours et Affaires Davout & Séjours et Affaires Saint Mandé			
Private studios en-suite bathroom and kitchenette			Contact LSI Paris
Appart'City La Villette & Appart'City Grande Bibliothèque			
Private studios en-suite bathroom and kitchenette			Contact LSI Paris
Please note that due to high demand in Paris, students have one month to confirm their accommodation. Accommodation prices are subject to change throughout the year. It is important to contact LSI Paris to confirm the prices at the time of your exchange programme. Arrival and departure dates for Homestay: Sunday to Sunday. HB is compulsory for U18s. [†] No evening meal on Fri and Sat. * When two students book for the same start date.			

 Other accommodation options available at www.lsi.edu/accommodation

Additional Course Information

 Class size: Max 16 students.
 Lesson duration: 50 min (45 min for Premium Courses).

General Courses

 Start dates for Elementary to Advanced levels: Every Monday.
 Start dates for Beginner level: First Monday of every month.

TEF

Start date: Every Monday.

DEL F & CCIP

Start date: Contact LSI Paris.

Academic French 30/Academic Term Abroad (ATA)/Academic Year Abroad (AYA)

 Start date: Every Monday.
 Recommended start dates: First Monday of Jan, Apr and Sep.

Premium Courses

 Start dates (one-to-one, Mini Group): Every Monday.
 Start dates (9 Day Compact): Every Saturday.

French Experiences

 French with Cooking: Jan 8, Jun 3, Jul 1, Aug 5.
 French with History of Art: Mar 11, Jun 17, Jul 15, Sep 23.

Public Holidays

 No instruction on the following dates: Jan 1, Apr 1, May 1, 8, 9, 20, Aug 15, Nov 1, 11, 2024.
 Christmas & New Year: School is closed from Dec 23 2024 to Jan 1 2025 inclusive.
2025: School reopens on Jan 2.
 To obtain further information, please contact the school directly.

www.lsi.edu/yl-paris

Junior Courses

Registration fee	105
French Programmes for ages 12-17 years ¹ (Prices per person p/wk)	
French tuition only	400
French tuition + activities	Contact LSI Paris
French tuition + full board residence + activities	Contact LSI Paris
French tuition + full board residence + activities + weekend tours	Contact LSI Paris
Health Insurance required (p/wk)	Contact LSI Paris
Airport transfer required one way	Contact LSI Paris

Please note: Junior programmes in Paris are offered for closed groups only.

¹ Compulsory fee for unaccompanied minors under 16.

 Class size: 18 students.
 Lesson duration: 50 min.

Start dates

 Every Monday from:
 Winter 2024: Jan 8 to Jan 29 (course ends Feb 2, students depart Feb 3). GROUPS ONLY.
 Summer 2024: Jun 24 to Aug 12 (course ends Aug 16, students depart Aug 17). GROUPS ONLY.
 Winter 2025: Jan 6 to Feb 3 (course ends Feb 7). GROUPS ONLY.

Junior Courses for Groups

In addition to our published start dates, the school can accommodate groups of various age ranges at different times throughout the year. Maximum class sizes for closed groups are negotiable. One group leader may accompany each group of 10 to 15 students for free, including transfers, accommodation, and activities. For any additional leaders accompanying groups with fewer than 15 students, there will be a charge.

General/Academic

	ACADEMIC TERM ABROAD	ACADEMIC YEAR ABROAD		
No. of weeks. Prices p/wk	1-3	4-11	12-23	24+
Afternoon 10 ^	260	240		
General 20	500	460	440	390
Intensive 30	660	620	600	550
Course price (No. of weeks)				12
Goethe-Zertifikat B1				7200
Goethe-Zertifikat B2				7200
One to One Lesson price p/lesson				110
Plus Courses Supplement 5/10 lessons				550/1100
^ Not available on a Student Visa.				

Premium Courses

One-to-one						
No of lessons p/wk:	5	10	20	30	40	50
Course price	550	1100	2200	3300	4400	5500
9 Day Compact No of lessons:				82		92
Course price				9020		10120

Club 40+ Experience

No. of weeks. Prices p/wk						1-4
3 activities supplement						355
Please note that these activities are supplementary and exclusively for students aged 40+. This programme needs to be booked in addition to the G20. Students can choose to have lessons in mixed-aged classes of 16+.						

Additional Costs

EXAM FEES	
Goethe-Zertifikat B1	300
Goethe-Zertifikat B2	350
OTHER FEES	
Registration fee	135
Course materials p/wk up to max 20 wks	15
Courier fee	175
Airport transfer one way	165

Accommodation

Placement fee		135
HOMESTAY (zone 1-2, prices per person p/wk)	B&B	HB
Single room	360	455
Twin room*	280	355
Supplements (Prices per person p/wk)		
Executive supplement single/twin		85/65
RESIDENCE (Prices per person, p/month)		
LSI can advise on residences and availability but students are required by Swiss law to make bookings directly with the accommodation provider		
Maximilianeum 13 (self-catering)		
Single room		590-730
Single room with balcony		800
Accommodation prices are subject to change throughout the year. Therefore, it is important to contact LSI Zurich to confirm the prices at the time of your exchange programme.		
Arrival and departure dates for Homestay: Sunday to Saturday.		
* When two students book for the same start and end date.		

Other accommodation options available at www.lsi.edu/accommodation

Additional Course Information

Class size: Max 12 students.
Lesson duration: 45 min.
General Courses
Start dates for Elementary+ to Advanced levels: Every Monday.
Start dates for Beginner level: First Monday of every second month.
Beginners recommended start dates: Jan 8, Mar 4, May 6, Jul 1, Sep 2, Nov 4.
For interim start dates please contact the school directly.
Goethe-Zertifikat B1 (ZD), B2 (GZ)
Start date: Feb 5, Apr 8, Jun 3, Sep 2.
Exam dates: Apr 24-27, Jun 26-29, Aug 21-24, Nov 20-23.
Please be aware that exam dates are subject to change at short notice based on demand. To obtain further information, please reach out to the school directly.
Premium Courses
Start dates (one-to-one, Mini Group): Every Monday.
Start dates (9 Day Compact): Every Saturday.
Club 40+ Experience
Start dates: Mar 4, May 6, Sep 2 and Nov 4. Students can join the programme every Monday within the 4-week course period.
Public Holidays
No instruction on the following dates: Jan 1 to 5, 29, Feb 6, Mar 29, Apr 1, 25, Jun 3, 28, Oct 28.
Christmas & New Year: School is closed from Dec 23 2024 to Jan 3 2025 inclusive.
2025: School reopens on Jan 6.
To obtain further information, please contact the school directly.

LSI Terms and Conditions

CONDITIONS OF ENROLMENT

1. Application

Please send the signed enrolment form to your chosen LSI school or Educational Tour Operator with the enrolment fee and, if applicable, the courier fee. Students over 18 (19 in Vancouver) must sign the enrolment form to say that they have read and agree with these terms and conditions. The parents or guardians of students under 18 (19 in Vancouver) must read and also sign the enrolment form on their behalf. Your privacy is important to us. Please note that by submitting your personal data to us, you are accepting the terms described in our privacy policy, which can be found at: www.lsi.edu/privacy

2. Payment conditions

All course fees must be paid in full no later than 30 days before the course starts. If a booking is made less than 30 days before the course starts, the fees are immediately payable. If payment in full has not been received, you will not be allowed to start your course.

Australia: For individual courses longer than 24 weeks, 50% of tuition fees and 100% of all other fees must be paid in full no later than 30 days before the course starts. If a booking is made less than 30 days before the course starts, the fees are immediately payable. The remainder of the tuition fees is required two weeks before the start of the second study period of any individual course.

New Zealand: All student fees are to be deposited in the following account: Language Studies International (NZ) Ltd – Student Fees Trust Account (details on invoice). In the event of insolvency, regulatory closure or withdrawal, or partial withdrawal of accreditation, LSI students may apply to dfk Oswin Griffiths Carlton for a refund of unused fees. Please post claims to LSI Student Fees Trust, dfk Oswin Griffiths Carlton, Level 4, 52 Symonds St, Auckland 1010, NZ

3. Bank charges

LSI reserves the right to charge up to an additional 2.75% processing fee for all credit card payments. For payments made via bank transfer, LSI reserves the right to charge an additional fee to cover bank charges. In both these cases, students will be informed of any such fees at the time of purchase.

4. Visa information

It is the responsibility of the student to arrange all applicable travel permits or visas and to have a valid passport and leave to remain for the whole period of study. The student may be asked to make payment in full prior to the issuing of any of the visa documentation referred to below. LSI is not liable for any decisions made by the Immigration departments of the countries concerned.

UK: If your application is successful, we will provide a Confirmation of Acceptance of Studies (Tier 4 GSV and CSV applicants only). Tier 4 applicants must provide a Secure English Language Test (SELT) to establish their level of English is appropriate before they apply for their visa. Students whose level of English is lower than intermediate should use the Student Visitor route SVV or ESVV. See the following website for further details: www.ukba.homeoffice.gov.uk/studyingintheuk

USA: Once we have received your application, we will send a Proof of Funds form, which must be completed in order for LSI to issue you a Certificate of Eligibility (Form I-20), which is required in order to apply for a student visa at the US Consulate.

Canada: We will provide you with an invitation letter to assist you with your visa application.

New Zealand: In accordance with government regulations, visa support (Fees Receipt and Acceptance Letter) is only issued by LSI when full payment has been received. Full details of visa and permit requirements, advice on rights to employment in New Zealand while studying, and reporting requirements are available through the New Zealand Immigration Service and can be viewed on their website at: www.immigration.govt.nz. We strongly recommend LSI NZ students to check information on this website, including but not limited to, medical certificate requirements associated with visa applications. By agreeing to our Terms & Conditions upon enrolment, LSI NZ students are confirming that they have been made aware of information found on this website.

Australia: Visa application forms (Confirmation of Enrolment) may not be issued by the school until full payment has been received and the enrolment agreement has been signed and returned. The enrolment agreement includes reference to the pre-departure and grievance procedures information and can be found on our website: www.lsi.edu

Switzerland: We recommend you check the CH Immigration website for the most up to date information about Visas and Immigration regulations. For courses which are longer than 12 weeks, a student visa must be obtained prior to entry into Switzerland. Fees must be paid in advance in order to obtain the documents required for the student visa application. Please visit the website: www.bfm.admin.ch/bfm/en/home.html for full information about visa applications and travelling to Switzerland. The student visa application process for Zurich takes at least 3 months to complete.

5. Courier fees

If you enrol on a course in the USA less than 30 days before the course start date and require an I-20, a courier fee of US\$65 will be charged to cover the expedition of visa documentation. If you enrol more than 30 days before the course start date, documentation will be sent by normal postal service, unless you request and pay for the courier service. In all other countries, a courier service is available on request. UK: £75, Canada: CAD\$100, New Zealand: NZ\$115, Australia: AU\$75, France: €115, Switzerland: CHF165

6. Under 18 year olds (19 in Vancouver)

LSI delivers adult courses (except for programmes advertised as being for Juniors). Therefore, students aged 16 and 17 will be attending classes and sharing facilities with students aged 18 and over. Under 18 year olds may be required to pay a guardian fee, provide custodianship documents, live in LSI-approved accommodation, book LSI's airport transfer service and purchase insurance. All students under 18 (19 in Vancouver) must provide a signed Parental Consent form prior to arrival, and for Canada they must also provide a signed Health Declaration and excursion waiver form.

New Zealand: Students under the age of 18 staying in family accommodation must book half-board and a return airport transfer. Unless otherwise requested by a parent or guardian, students under the age of 18 staying in family accommodation will be expected to return to their accommodation by no later than 22.00 hours each evening.

7. Health declaration

Students must report on their enrolment form any mental or physical illness, allergy, disability or condition and details of any associated medicines that may interfere with their ability to successfully complete their programme, that may impact the health and well-being of any other student, host or staff member, that may require monitoring, treatment or emergency intervention of any kind during the student's anticipated period of enrolment, or that may require special accommodations. LSI reserves the right to reject an applicant or terminate a student's enrolment in the programme if the student's continued participation represents a risk to their health and safety or to the health and safety of other students or staff, or if, notwithstanding reasonable accommodations, in the opinion of LSI, the student's physical or mental condition makes the student unable or unlikely to successfully complete their programme. Any refunds in such circumstances will be made at the discretion of LSI.

Immunizations: In order to register, all students must have had the required immunizations, subject to the current guidelines of local medical authorities where LSI schools operate. It is the student's responsibility to ensure that they have had the applicable immunizations before departure and they may be required to provide evidence upon arrival. More information about immunizations currently required can be obtained from the local LSI school.

8. Additional services

Any additional services (transfers, travel, laundry, telephone costs, excursions, medical costs, special diet, exam fees, change of accommodation and enrolment amendments) are not included in any fees unless specifically stated on a valid invoice.

9. Twin accommodation

At LSI's discretion, students may be required to book single room accommodation instead of twin room accommodation.

10. Travel and medical insurance

Travel and medical insurance is strongly recommended at all LSI schools for the duration of your stay, regardless of your course length or course/visa type. For some programme or visa types, insurance is compulsory (please check with the school for further details). It is your responsibility to ensure that you have the appropriate cover before departure and for the duration of your stay. Students may be required to show proof of medical insurance at the school upon arrival and may not be allowed to commence a course until satisfactory medical insurance has been obtained. Travel and medical insurance can be purchased from a third party through LSI when booking. Details of what this covers are available from your Educational Tour Operator. You are responsible for the belongings which you bring with you to LSI schools or accommodation and for taking out insurance for your own possessions.

Australia: The Australian government requires all students on Student Visas to join the Overseas Student Health Cover (OSHC) scheme, a health insurance plan for overseas students in Australia. Payment of AU\$48/month for compulsory OSHC for the duration of the student's visa must be made before a visa can be issued.

New Zealand: Most international students are not entitled to publicly funded health services while in New Zealand. If you receive medical treatment during your visit, you may be liable for the full costs of that treatment. Full details on entitlements to publicly funded health services are available through the Ministry of Health and can be viewed on their website at www.moh.govt.nz. In addition, The Accident Compensation Corporation provides accident insurance for all New Zealand citizens, residents and temporary visitors to New Zealand, but you may still be liable for all other medical and related costs. Further information can be viewed on the ACC website at www.acc.co.nz.

Switzerland: We recommend all students staying for periods up to 3 months apply for full travel and medical insurance before leaving their home country. Once a student is at the school, we provide assistance to those wishing to apply for Swiss medical insurance for periods of study extending beyond this initial 3 months.

11. Postponement

In the event of a course postponement, you may be re-booked at the rates currently in effect at the time of re-booking. 3 postponements will be free of charge, while upon a 4th postponement request, LSI will charge a postponement fee, an amount equivalent to the registration fee.

12. Special Offers

Special Offers must be booked and paid for prior to the stated expiration date. The relevant special offer code must be provided at the time of booking. Promotion prices apply to new enrolments only. Existing enrolments cannot be cancelled and rebooked at the promotion price. Only one special offer is valid per enrolment. Special offers cannot be combined. All special offers are subject to availability and are subject to change.

GENERAL

1. Rules and regulations

Students' arrangements with LSI are governed by the law of the country where the particular school attended is located.

2. Programme changes

LSI reserves the right to change course dates, course curricula, course schedules, tutors, locations and programmes at any time at its discretion. In cases where the course is rescheduled prior to the start of the first course and the new date is unacceptable to the student, all fees will be refunded. However fees will not be refunded for changes to weekly timetables.

3. Arrivals and departures

Depending on the school, accommodation is booked from either Saturday or Sunday before the course start date until the Saturday or Sunday after the course end date. Please check with the individual school for details. A partial week may be counted as 1 week's accommodation. Students arriving between

22:30 – 6:00 may be asked to book alternative accommodation in a hotel on their first night due to late/early arrival at accommodation, or be charged an extra night of accommodation. Certain residences may also have set arrival times. Please check with the school for further details.

4. Residential housing deposit

A refundable deposit may be charged on arrival to students taking residential accommodation. The deposit is returned unless there is damage, loss or extra cleaning to be paid for on the student's departure. In some cases the deposit may be non-refundable if the booking is cancelled. Please refer to our various accommodation brochures for further details.

5. Late arrivals, vacations and absences

If you begin your enrolment late or are absent during your course, no refund will be made for the time missed. Periods of absence cannot be made up with a free extension of the course. Vacation dates are pre-built into the Academic Year and students cannot make changes to these dates. Breaks taken at other times will be marked as periods of absence. For other courses, granting of any Session Breaks after the course has started will be at the discretion of individual schools, according to visa regulations, and may incur a change fee (except in the USA) or be marked as a period of absence.

6. Public holidays

Classes are normally not held and most school facilities are closed on public holidays. All published course start dates fall on a Monday. If the Monday is a public holiday, the start date will fall on a Tuesday. Compensation will not be made for classes not offered on public holidays.

7. Meals and classes missed

No refunds or substitutions will be made for meals or classes missed due to exams, excursions, internships, first day orientation or other obligations that fall outside the normal schedule.

8. Substitution policy

If, after the placement test taken on arrival at the school, a student is found to be at a level which is not appropriate for their booked course, the school reserves the right to place the student in an appropriate level class, or LSI centre, which may have fewer lessons and a different curriculum. Students who do not have the ability to follow any course on offer may be required to terminate their studies with LSI. We also reserve the right to cancel courses at short notice due to insufficient demand.

9. Books and learning materials

All books and learning materials will be made available to students during their course. Unless otherwise stated, students share class sets of course books and receive photo copies.

In New Zealand, Australia, Canada, France & Switzerland a materials fee is charged. New Zealand: NZ\$20 p/wk (max 20 weeks), Australia: AU\$15 p/wk (max 20 weeks), Canada: CA\$75 (Cambridge courses), France: €10 p/wk (max 20 weeks) & Switzerland: CHF15 p/wk (max 20 weeks).

10. Duration of lessons/timetable/class sizes

All English lessons are 50 minutes in duration unless otherwise stated. Courses run from Monday to Friday and lessons are scheduled in the morning or the afternoon. LSI cannot guarantee a specific timetable.

11. LSI Level Policy

Through a rigorous system of skills testing, students are organised into classes with the other students in the school who have the closest equivalent language level. LSI operates up to six different levels, from Beginner to Advanced, which have been closely matched to the Common European Framework, TOEFL iBT, TOEIC, IELTS and University of Cambridge examinations. To reach each level students must master specific level objectives, demonstrated through test scores and class participation. Subject to student numbers, and ensuring the learning outcomes of every student in the class, LSI may operate bridge classes where two LSI levels are taught together.

12. Electives

Electives refer to the various options offered as part of LSI's Intensive 24, 25 and 30 lessons per week programmes. Electives include, but are not limited to, TOEFL iBT, TOEIC, IELTS, English for Business and Fluency. For a full list of electives available, please refer to the school pages on our website. In order to ensure all electives are available year round, subject to student numbers and ensuring the learning outcomes of every student in the class, courses may sometimes be combined.

13. Cambridge Language Assessment

Subject to student numbers and ensuring the learning outcomes of every student in the class, Cambridge 30 lessons per week programmes may be combined with LSI's Intensive English programme and/or electives.

14. Change fees

A minimum of 2 weeks' notice is required for any change (2 weeks' notice in USA). If you request a change of school location, course dates, accommodation or programme type after your course has started, you will be charged a change fee of UK: £60, Canada: CAD\$100, New Zealand: NZ\$100, Australia: AU\$100, France: €100, Switzerland: CHF100, which is payable at the time the request is made. LSI is not obliged to fulfil any change request. If changing to a location where fees are lower, the difference in fees will not be refunded. If changing to a more expensive location or programme, the difference in fees will be charged. You will not be charged a change fee if you extend your course.

All changes are subject to LSI's discretion and require approval of the Programme Director. It is the responsibility of the student to pay for any course or accommodation extensions. Any change of tuition resulting in a reduction in lessons will be treated as a termination of the existing booking and rebooking (except in the USA), and will thus be subject to the standard terms & conditions governing terminations (see 'Termination Policy'). In addition, certain visa types may disallow changes to course type and length. Please ask the school for more information at the time of booking.

15. Expulsion/Suspension

Any student who commits a criminal offence, violates the LSI Code of Conduct or a school behavioural policy, has a poor attendance record (based on the school's attendance policy, whether or not such attendance is in breach of any visa attendance requirements), is absent for 10 consecutive days without notification (USA), or fails to pay an amount he

LSI Terms and Conditions (Continued...)

or she is directly or indirectly liable to pay LSI, may be expelled, suspended or removed from the course, school and any accommodation provided. No refund will be given and the immigration authorities will be informed.

16. Liability

The liability of LSI, its group companies, their directors, officers, employees, affiliates, Educational Tour Operators with respect to losses arising from negligence (except where such liability cannot be excluded as a matter of law), breach of contract or otherwise, will be limited in all circumstances to the full amount paid to LSI or the relevant LSI group company by the relevant student for the particular programme. Such companies and persons will in no circumstances have any liability for indirect or consequential losses or damages.

17. Force majeure

LSI will not be liable in cases where LSI is unable to fulfil any services to which they are contractually bound because of fire, natural disaster, act of government, failure of suppliers or subcontractors, labour disputes or other reasons which are beyond LSI's control.

18. Codes of practice

LSI has agreed to observe and be bound by the Code of Practice for the Pastoral Care of International Students as administered by our various local accrediting agencies. UK: British Council & ISI Private Further Education, USA: ACCET, Canada: Languages Canada, Australia: the Australian National Code of Practice 2007 and the Educational Services for Overseas Students Act 2000 (ESOS Act 2000) (information on which can be found at www.aei.gov.au), France: Qualité FLE, Switzerland: EAQUALS, New Zealand: NZQA. We strongly recommend all LSI NZ students to check NZQA's website www.nzqa.govt.nz before booking. By agreeing to our Terms & Conditions upon enrolment, LSI NZ students are confirming that they have been made aware of information found on this website.

19. LSI Student Code of Conduct

Students must agree to abide by LSI's Student Code of Conduct and other policies while attending LSI. Inappropriate conduct includes but is not limited to: (1) disruptions to the learning environment, including the classroom and online, (i.e. use of profanity, harassment, mobile phone use in classrooms, etc); (2) deliberate destruction, misuse, or theft of LSI property or the property of fellow classmates; (3) violence or threats of violence towards persons or property of students or LSI staff; (4) improper use of email or Internet access and (5) failure to comply with local copyright or criminal laws forbidding the misappropriation, copying or alteration of copyright-protected materials. Further details of LSI's Code of Conduct can be found at www.lsi.edu/code

Damage to property: LSI reserves the right to charge students who engage in vandalism, graffiti or criminal damage of any kind for the repair/replacement cost of any damage they cause. LSI also reserves the right to charge students responsible for damage caused to LSI property or 3rd party property by accident.

20. Student Visa UK, USA, Canada, New Zealand & Australia

At all LSI schools full attendance is expected. Student visa holders are required to provide LSI with a current residential address and telephone number at all times, maintain satisfactory academic progress and maintain satisfactory attendance, (subject to the school's own attendance policy). Students who fail to show up for their enrolment or do not maintain satisfactory attendance will be reported to the Department of Immigration and Citizenship (DIAC) in Australia, The Border Agency in the UK, Department of Homeland Security (DHS) in the USA, Citizenship and Immigration Canada (CIC) in Canada, or to New Zealand Immigration Services. In the UK, for students on Tier 4 visas, if 10 contact days are missed consecutively the student will be reported to the UK Border Agency. Information collected by LSI which personally identifies a student and information regarding a student's course progress may be shared with the Australian State and Federal or British government, Department of Homeland Security, state and accrediting agencies (USA), designated authorities, the Tuition Protection Service (Australia), students' parents, LSI staff and Educational Tour Operators. This information may include personal and contact details, course enrolment details and changes, and circumstances of any suspected breach by the student of any visa condition.

21. Prices

LSI has the right to change prices due to tax increases, governmental actions or other events beyond LSI's control. Prices listed for third party suppliers, including residence accommodation, are subject to change. If third party suppliers increase their prices after LSI has listed its annual prices, LSI reserves the right to pass on these increases to students. New Zealand: All fees, except homestay fees, are subject to a 15% government tax (GST). Should this be increased, our fees will increase accordingly.

22. Fees outstanding

Tuition fees include lessons, orientation meeting, use of computer room and internet in school, placement and progress testing, E-LSI online learning system, and a LSI certificate on completion of the course. LSI reserves the right to withhold the granting of a certificate attained by a student if tuition fees or any other fees remain outstanding, or other conditions are not met.

23. Photography, Filming and Sound Recording

LSI or the Educational Tour Operator may arrange to photograph or shoot video footage of students or use their written feedback for promotional purposes, both printed and online.

UK, France, Switzerland: students (and their parent/guardian if under 18 will be asked to give consent before any specific photography, filming or recording to agree to their participation. Withdrawal of consent can be made at any time by emailing info@lsi.edu

Rest of World: Any student who does not wish to participate should advise us at the time of booking and state at the time of the photographing or video shooting the wish not to participate. By accepting these terms and conditions the student (and their parent/guardian if under 18) gives consent to the use of these photographs or video footage without further consent or notification.

24. Online Learning

Online classes may be recording for training and quality assurance purposes. Changes to or cancellations of on-line lessons must give at least 36 hours notice. Cancellations made after this time will result in a lost class.

REFUND POLICY

1. Service Charges

Unless otherwise stated, enrolment fees are non-refundable. All other service charges having already been incurred by LSI, including but not limited to, courier fee, accommodation placement fee/deposit and medical insurance, will not be refunded (up to a maximum charge of US\$250 for LSI schools in California and US\$500 in other LSI USA schools).

2. Visa denials

On written notification of a visa rejection and receipt of relevant supporting documentation, 100% of fees will be refunded less enrolment fee, accommodation placement and all other (utilised) service charges. In all cases where a visa or visa support documentation has been issued, the relevant immigration authorities will be informed.

Australia: In Brisbane, in accordance with the Education Services for Overseas Students Act 2000, all course fees (tuition and non-tuition) will be refunded minus the lesser of the two following amounts a) 5% of the course fees received by LSI b) AU\$500.

3. Cancellation before the course start date

All cancellations must be in writing and sent by e-mail or post. The date of arrival at LSI of the email or of the letter determines the period of notice to be applied. Cancellations in the US may be made verbally.

3(a), Tuition

UK, Australia, France & Switzerland: For cancellations made 31 days or more prior to the course start date, all tuition fees are refunded. For cancellations made 1-30 days prior to the course start date, 2 weeks tuition fees are charged.

New Zealand: (in accordance with the NZQA and LSI refund policy).

For cancellations made prior to the course start date, all tuition fees are refunded.

USA: California For cancellations made prior to or on the course start date, all tuition fees are refunded minus US\$250 in non-refundable enrolment/service (non-tuition).

Massachusetts and New York LSI will retain cancellation fees equivalent to 4 weeks' worth of RRP tuition fees as listed on our website.

I-20 transfers - LSI cannot transfer students' I-20s to other institutions without having formally enrolled students at the school - i.e. without the student having started the first week of their programme. Students who do not arrive to start their course will have their I-20s cancelled.

Canada (Toronto): For cancellations made less than 7 days after the contract is made, 75% of all tuition fees are refunded (maximum \$400 retained by LSI). For cancellations or dismissals from the program 30 days or more before the start of the course, 75% of all tuition fees are refunded. For cancellations or dismissals less than 30 days before the start of the course, 60% of all tuition fees are refunded.

Canada (Vancouver): For cancellations made less than 7 days after the contract is made, 100% of all tuition fees are refunded other than the Registration Fee. For cancellations or dismissals from the program 30 days or more before the start of the course, 90% of all tuition fees are refunded and LSI will retain no more than \$1000. For cancellations or dismissals less than 30 days before the start of the course, 80% of all tuition fees are refunded and LSI will retain no more than \$1300.

3(b), Accommodation

UK, Canada, New Zealand, Australia, France & Switzerland: For cancellations made 14 days or more prior to the course start date, all accommodation fees are refunded, less any penalties incurred by LSI from 3rd party suppliers. For cancellations made 1-13 days prior to the course start date there is a charge of either 2 weeks accommodation fees or any penalties incurred by LSI from 3rd party suppliers (whichever is the greater sum).

USA: For cancellations made 30 days or more prior to the course start date, 100% of the accommodation fees will be refunded, less any actual housing costs incurred by LSI, including penalties from 3rd party suppliers. If less than 30 days' notice is provided for a cancellation, there is a charge of either 2 weeks accommodation fees or any penalties incurred by LSI from 3rd party suppliers (whichever is the greater sum).

4. Termination Policy – Cancellation after the course has started

'Termination' means stopping or leaving all or part of the course or courses booked, including extensions, once the first course has started.

When determining the number of weeks completed, outside of California, a partial week will be counted as a whole week, provided the student was present at least one day during the scheduled week. In California, tuition fees for partial weeks are accounted for pro rata. Discounted tuition and accommodation packages used by the student will be charged at the recommended retail price, as listed on our website, when any refund is calculated. In all cases additional service charges (airport transfers, courier fees, enrolment fees, insurance, accommodation placement fee, programme supplement fee, etc.) are non-refundable and written notification of termination must be given to the school Principal or Director (In the US, notification of termination may be verbal.) Students who terminate their programme may not be eligible to receive a LSI certificate and will not be allowed to stay in LSI accommodation.

4(a), Tuition

UK, Australia, France & Switzerland: No refunds will be made for tuition. Tuition fees are non-transferable to other students. Tuition fees paid cannot be converted to alternate courses.

USA: If the student terminates after having completed more than 60% of the program in California or 50% in New York and Massachusetts, there is no refund. In all other cases, unused tuition fees are refundable. Unused tuition fees are calculated as follows: the amount owed equals the daily charge for the program (total institutional charge, divided by the number of days or hours in the program), multiplied by the number of days student attended, or was scheduled to attend, prior to withdrawal. The value of tuition taught is based on RRP prices as listed on our website. For terminations, I-20s will be cancelled immediately. Students wishing to transfer their I-20s to other institutions should check with their LSI school for conditions. Extensions are treated as new programmes and are subject to standard termination fees.

California Tuition fees for unused classes are refunded minus US\$250 in non-refundable enrolment/service (non-tuition). Please note, in California a student may cancel a programme (as opposed to terminate a programme) either on the first day of class or the 7th day after the enrolment agreement is signed, whichever is later.

Massachusetts and New York For students whose last day of attendance occurs at any point in the first four weeks of their initial period of financial obligation, the institution will retain the charges applicable to the first four weeks. For students whose last date of attendance occurs after the first four weeks but before or at the mid-point of their period of financial obligation, the institution may retain a prorated amount of tuition. For students whose last date of attendance occurs after the midpoint, the institution will retain all of the charges for that period.

Canada (Toronto): Students wishing to terminate must give 4 weeks' notice to the School Director. The refund will be calculated as follows according to the percentage of the course completed including the notice period: 0-10% of the programme has been completed: 50% refund of unused tuition fees, 11-29% of the programme has been completed: 30% refund of unused tuition fees, 30% or more of the programme has been completed: 0% refund of unused tuition fees.

Canada (Vancouver): Students can withdraw at any time without advanced notification. The refund will be calculated as follows according to the percentage of the course completed including the notice period: 0-10% of the programme has been completed: 70% refund of unused tuition fees, 11-29% of the programme has been completed: 50% refund of unused tuition fees, 30% or more of the programme has been completed: 0% refund of unused tuition fees.

4(b), Accommodation

UK, USA, Canada, Australia, Switzerland & France: Students must give 4 weeks' notice in writing to the School. A refund will be made of the unused accommodation fee less the applicable notice period and the applicable change fee. Penalties incurred by LSI from 3rd party suppliers as a result of accommodation terminations will be charged to the student (if in excess of any fees held from the notice period). For terminations made after 50% of the booking has been completed, no refund will be given in the UK.

5. New Zealand Termination Policy:

LSI NZ provides Termination refunds based on the package price (tuition, accommodation & all other service charges). For courses of 3 months or longer, students withdrawing within the first 10 working days of the course must be refunded in full less a deduction for costs incurred by LSI, up to a maximum of 25% of the fee total paid. LSI will provide the student with details of the cost components for the purpose of working out the maximum deductible percentage. In the event of a dispute over the cost component deducted, the student can contact iStudent Complaints by phone on 0800 00 66 75 or visit the iStudent Complaints website: www.fairwaysresolution.com/isudent-complaints. (For Domestic Students: for courses of 3 months or longer, withdrawals made within the first 8 calendar days of the course will be refunded in full less a deduction of 10% or \$500 payable to LSI, whichever is the lower amount). Where a foreign student enrolled on a course of study that is less than three months' duration withdraws from such a course, the following minimum refund entitlement will apply:

a) For courses of up to and including four weeks and six days: where a student withdraws within the first two days of the course LSI will retain 50% of the full amount and refund the balance to the student. b) For courses of five weeks or more but less than three months: where a student withdraws within the first five days of the course LSI will retain 25% of the full amount and refund the balance to the student. Otherwise there are no refunds.

6. Method of Refund Payments

Refunds will be made via the Educational Tour Operator to whom the fees were originally paid, or via the same payment method and destination from which the fees were originally paid. For a calculation of fees refundable, please see above. With the exception of students studying in California, refunds made via an Educational Tour Operator are subject to the Educational Tour Operator's own cancellation refund policies. All refunds will be made within 45 days of written notification unless otherwise stated.

Australia: Refunds will be paid within 14 working days of written notification. In accordance with sections 27-31 of ESOS Act 2000, providing the student has not withdrawn before the default day, LSI will pay a full refund to the student within 14 days if the course being offered does not commence on the agreed starting day or the course stops being provided at any time after it starts and before it is completed. This agreement and the availability of the complaints and appeals process does not prevent the student from taking action under Australia's customer protection laws.

New Zealand: LSI NZ is a booking, placing, and collection agent for Homestay (HB & B&B) and Hostel Accommodation. Any accommodation refunds will be made to the student on completion of the course if the student has given 2 weeks' notice in writing.

LEGALLY BINDING

The LSI Enrolment Agreement is legally binding when signed by the student and/or the student's legal guardian, and is accepted by LSI.

SUBJECT TO CHANGE

These Terms and Conditions may differ according to any changes in policy made by the accrediting body or government where the school is located. You will be notified at the time of booking of any such amendments. Any dispute, claim or other matter arising will be subject to the current laws in the destination country.

All prices & dates in this brochure are correct at the time of printing, but are subject to change.

Student Information

Family name:
(as it appears in the passport)

First name(s):
(as it appears in the passport)

☐ Male
☐ Female

Date of birth (D/M/Y):

Country of birth:

City of birth (required for US I-20):

Nationality/Citizenship:

Mother tongue:

Occupation:

Full address:

City:

Postcode:

Passport number:

Country:

Student email (required for e-learning registration):

Telephone (home):

Telephone (mobile):

Students under 18 years of age (19 in Vancouver):

Name and surname of legal guardian:

Telephone number of legal guardian:

Email of legal guardian:

Permanent address of legal guardian:

City:

Postcode:

LSI Representative Information

Partner name/contact person:

Country:

Email:

Telephone:

For all partner bookings, please confirm who will be responsible for the total payment of this booking by selecting an option below:

☐ Partner
☐ Student

☐ Partner and Student (please give details including amounts):

Partner signature:

Course Information

School name and location:

Course name:*

Lessons/week:

Number of weeks:

Start date (DD/MM/YY):

Language level:

Type of visa sought:

* Please check the relevant school page and make sure your chosen course is offered at the school you have selected. For multi-centre courses please contact the LSI booking office.

Course Fees

Registration:

Tuition:

Housing:

Sundries:

Total charges for the course:

(Tuition includes all equipment, supplies, learning materials (print & digital), internal LSI assessments. Course payments are subject to LSI T&Cs. See previous pages.)

Please return the completed form to the LSI booking office or to your local representative.

Accommodation

Accommodation type:

☐ Homestay
☐ Apartment
☐ I will arrange my own

☐ Residence
☐ Hotel

Room type:

☐ Single
☐ Twin (2 beds)*
☐ Double (1 bed)*

Meals per week:
(if different options are advertised)

☐ B&B
☐ Half-board

☐ Full-board

Homestay Supplements: (Only where advertised. Extra charges apply)

☐ Private bathroom/Executive†
☐ Close to school supplement (London and New York)†

Zone: (If applicable)

Accommodation name:
(if known)

Check-in date
(D/M/Y):

Check-out date
(D/M/Y):

Do you have any special requests? (e.g. medical requirements, allergies, special diet, no cats/dogs)

☐ Yes
☐ No

If yes, please specify:

Do you smoke?

☐ Yes
☐ No

Other accommodation supplements may apply, including seasonal supplements during the summer or at Christmas. See price list or contact the school for details.

* 2 students booking together † Subject to availability. Please check before booking.

Additional Services

Would you like LSI to organise insurance?

☐ Yes
☐ No

If not, you will need to organise your own medical insurance.

If you are travelling to Australia, would you like Overseas Student Health Cover? (Mandatory for student visa)

☐ Yes
☐ No

Would you like an airport transfer?
(If yes, please send us your flight details)

On arrival:

☐ Yes
☐ No

On departure:

☐ Yes
☐ No

Would you like to receive your course confirmation/visa application documents by courier (express) mail for an additional fee?

☐ Yes
☐ No

I would also like to book the following services:
(Not available in all destinations. Additional fees may apply. Please check the relevant school page)

☐ Internship Placement
☐ University Pathway

Payment

At this time, I wish to pay: ☐ the enrolment fee ☐ the full fees

Method of Payment:

☐ I wish to pay by credit card. (Please pay online at [www.lsi.edu](#) or contact LSI to arrange payment)

☐ I enclose a cheque made payable to Language Studies International (LSI). (Not available at LSI Zurich)
Cheque amount:

☐ I would like to pay via bank transfer. Please send me transfer details.

☐ I am sponsored by:

Medical and Psychological Conditions

Do you have a disability, impairment or long-term medical or psychological condition which may affect your studies? This includes, but is not limited to, learning disabilities, anxiety and mental health issues, and dietary allergies.

☐ Yes
☐ No

If yes, please provide further information. Please see our Terms and Conditions/Health Declaration.

Declaration

☐ I authorise any licensed hospital or physician to initiate medical treatment for myself in case of medical emergency or for my child if he/she is under 18 years of age (19 in Vancouver).

☐ I confirm that I have read, understood and agree to be bound by LSI's Terms and Conditions ([www.lsi.edu/terms](#)).

In order for you or your child to study with us, LSI processes your data and/or that of your child. How and why we do this, and your rights over this data, are in our Privacy Statement.

☐ I have read, understand and consent to LSI processing the data as described in our Privacy Statement ([www.lsi.edu/privacy](#))

Student Signature:

Date:

Signature of parent/guardian:*

Date:

* Required if student is under 18 years old or 19 years old in Vancouver

Special Promotion Code: